



VOYAGES

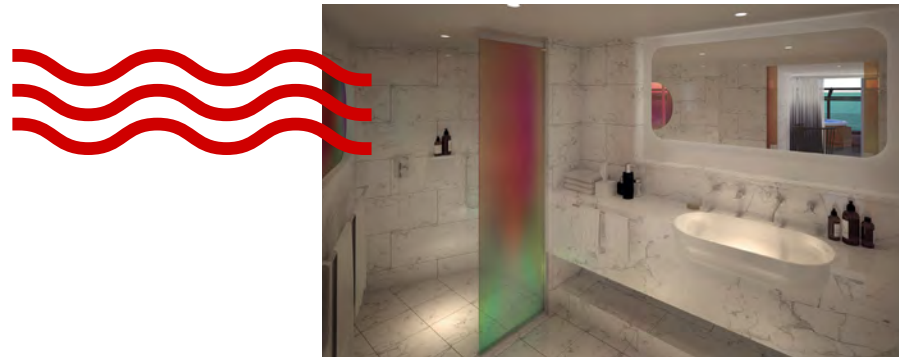
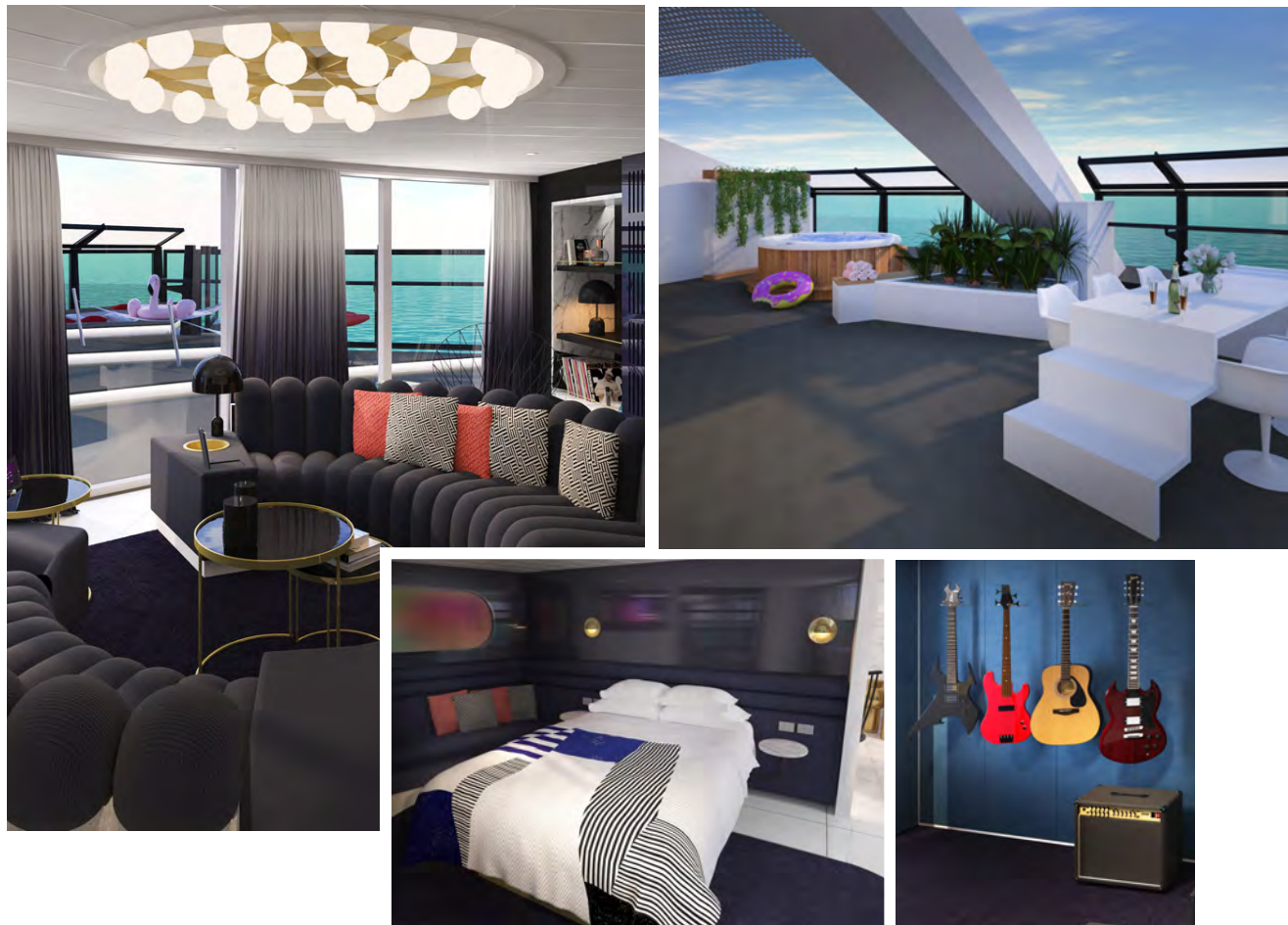
# SUITES

Can you say exclusive access throughout the ship,  
personal RockStar style riders, upgraded marble  
clad bathrooms with premium amenities and spaces  
conceptualized by world renowned designer, Tom Dixon?

Then let's talk suites.

Call The Cruise Village • 0800 810 8481





## MASSIVE SUITE (SM)

Positioned at the front of the ship for unparalleled views, this most tricked out, most extra, unreal three room suite at sea is fit for rock & roll royalty. Complete with a private music room that doubles as a second bedroom, it's all legend-style here, down to the brass and leather nautical finishings. Step outside to find things like sun loungers, a standing hot tub and an open air Peek-a-View shower onto the sea. The expansive top to bottom marble clad bathroom features an indoor Peek-a-Boo shower with an iridescent, dichroic glass window onto the European king bed. Sailors can debate the latest musical hits while sipping some bubbly at the Champagne bucket-style table on the terrace, lounging on the full length hammock, sitting in the conversation pit bar area or stretching out in the suite's private lookout point. Sleeps up to four.

<b>INTERIOR:</b> 830 square feet / 77.11 square meters
<b>TERRACE:</b> 1317 square feet / 122.35 square meters
<b>LOCATION:</b> Deck 15
<b>POSITION:</b> FWD
<b>TOTAL COUNT / ACCESSIBLE:</b> 2 / 0

UNIQUE CALL-OUTS:
Separate glam room with standalone tub
Circular sofa for hosting
Terrace conversation pit
2 separate wardrobes in glam room
Extra half bathroom
Music room
Terrace hot tub and runway table
Lookout Point - stargazing lounge area

HEROES:
Full-length hammocks
European king bed
Large marble bathroom with indoor Peek-a-Boo shower
Mood lighting
Champagne table
Fully stocked, in-room bar
Outdoor Peek-a-View shower

BRILLIANT BASICS:
Tom Dixon-designed suite
Glam area
Clever cabin technology
In-room entertainment: (2) 55" 4K TV + (1) 43" 4K TV
Steamer & hairdryer
In-room safe (fits 17" laptop)
More wardrobe space
Premium bathroom amenities
Upgraded linens
Vinyl record player
Plush robes

**Massively  
overwhelming.  
In a good way.**

Call The Cruise Village • 0800 810 8481

## FAB SUITE (SF)

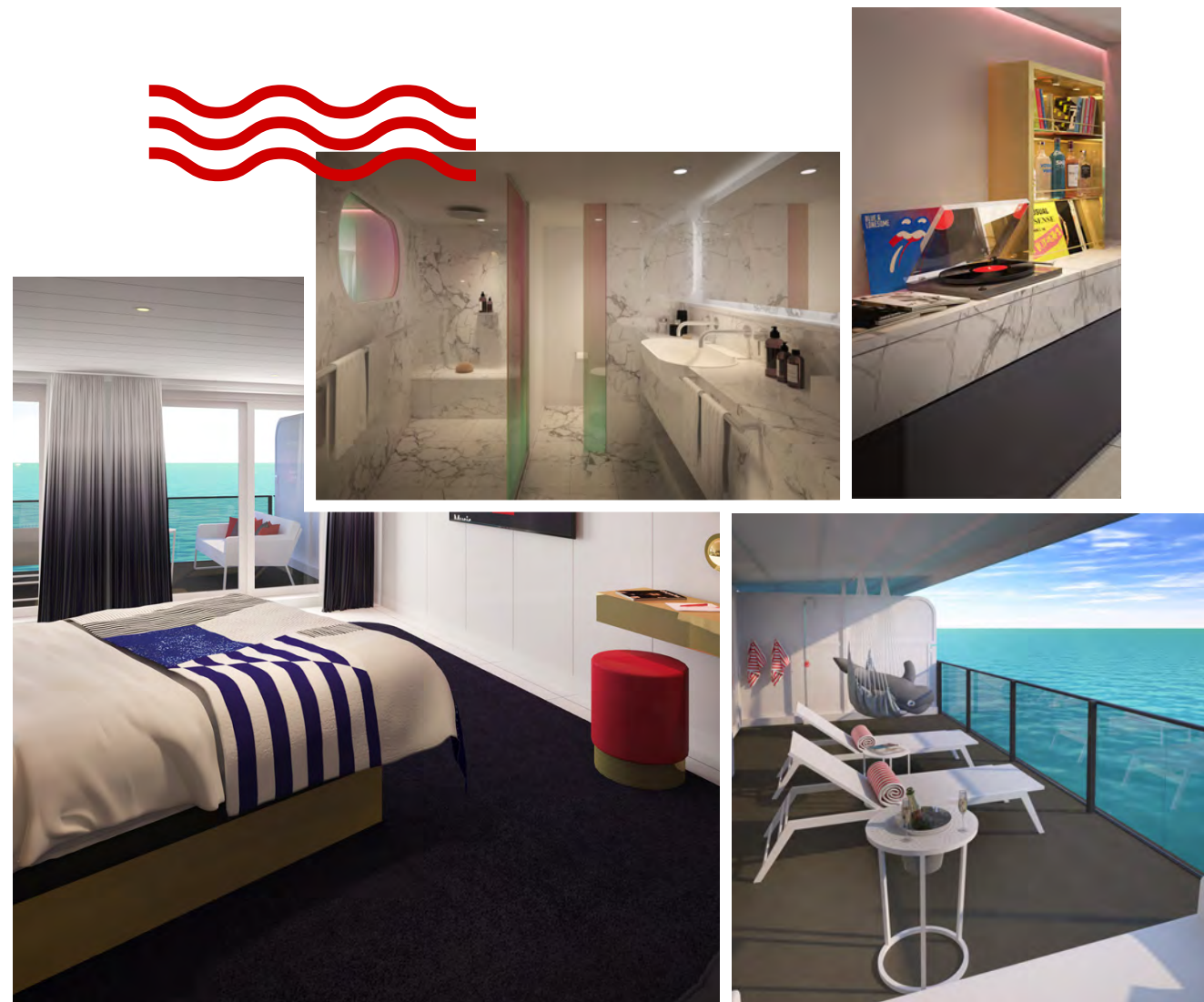
Whether a Sailor prefers sunshine yoga on the terrace, or serving up negronis at the fully stocked, in-room bar, this suite is perfect for those who love to host. When here alone, they'll be tasked with the age-old problem of relaxing in the fully marbled bathroom with an indoor dichroic glass enclosed Peek-a-Boo shower or rinsing off on the terrace in the suite's outdoor Peek-a-View shower under the moonlight. With brass nautical finishings throughout, Sailors can relax on the European king bed while cranking some tunes on the vinyl record player or head outside to the three-seater lounge then pop some bubbly at the Champagne table on the terrace. Sleeps up to four.

<b>INTERIOR:</b> 689 square feet / 64.01 square meters
<b>TERRACE:</b> 261 square feet / 24.25 square meters
<b>LOCATION:</b> Deck 15
<b>POSITION:</b> FWD
<b>TOTAL COUNT / ACCESSIBLE:</b> 2 / 0

HEROES:
Terrace hammock
European king bed
Large marble bathroom with indoor Peek-a-Boo shower
Mood lighting
Champagne table
Fully stocked, in-room bar
Outdoor Peek-a-View shower

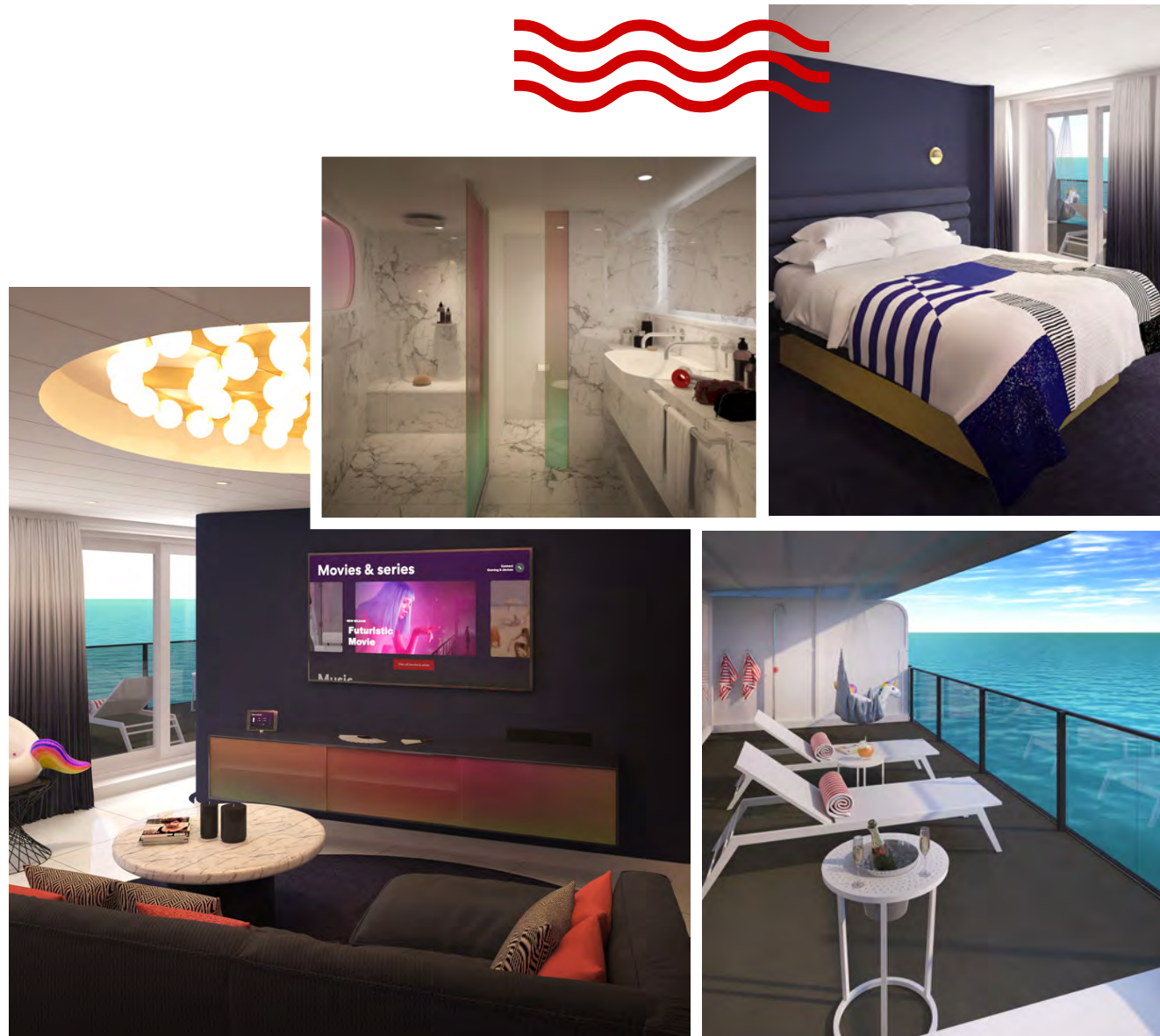
BRILLIANT BASICS:
Tom Dixon-designed suite
Glam area
Clever cabin technology
In-room entertainment: (2) 55" 4K TV
Steamer & hairdryer
In-room safe (fits 17" laptop)
More wardrobe space
Premium bathroom amenities
Upgraded linens
Vinyl record player
Plush robes

UNIQUE CALL-OUTS:
In-room glam brass vanity station
L-shaped sofa (converts to sleep mode for 2)
Terrace sofa and sun loungers
3-door wardrobe for extra space
Extra half bathroom
Entertainment credenza
Chaise lounge in bedroom



**Extravagance looks  
fabulous on you,  
honey.**

Call The Cruise Village • 0800 810 8481



## POSH SUITE (SP)

Not to be outdone by the (slightly) larger Massive and Fab suites, our Posh Suites are designed to make Sailors feel like royalty so they can live their most posh and glamorous life here. Complete with brass nautical finishings throughout, Sailors will enjoy the European king bed, while sipping a cocktail from the fully stocked, in-room bar and listening to tunes from the vinyl record player. Sailors can relax on the sun lounger next to the Champagne bucket style table overlooking the waves or rinse off with the open-air outdoor, Peek-a-View shower on the terrace. Head inside for the indoor Peek-a-Boo shower with an iridescent dichroic glass window, situated in the top to bottom marble encased bathroom. Sleeps up to four.

<b>INTERIOR:</b> 572 square feet / 53.14 square meters
<b>TERRACE:</b> 261 square feet / 24.25 square meters
<b>LOCATION:</b> Deck 15
<b>POSITION:</b> FWD
<b>TOTAL COUNT / ACCESSIBLE:</b> 2 / 0

UNIQUE CALL-OUTS:
In-room glam brass vanity station
L-shaped sofa (converts to sleep mode for 2)
Terrace sofa and sun loungers
3-door wardrobe for extra space
Extra half bathroom
Chaise lounge in bedroom

HEROES:
Terrace hammock
European king bed
Large marble bathroom with indoor Peek-a-Boo shower
Mood lighting
Champagne table
Fully stocked, in-room bar
Outdoor Peek-a-View shower

BRILLIANT BASICS:
Tom Dixon-designed suite
Glam area
Clever cabin technology
In-room entertainment: (2) 55" 4K TV
Steamer & hairdryer
In-room safe (fits 17" laptop)
More wardrobe space
Premium bathroom amenities
Upgraded linens
Vinyl record player
Plush robes

**If you wanna be my sailor, you gotta get with your friends.**

Call The Cruise Village • 0800 810 8481



## GORGEOUS SUITE (SG)

Relaxing is truly an art form in this suite. The terrace hammock here is the perfect spot to enjoy a nightcap while watching the moon flirt with the sea. Once inside, Sailors can lose themselves in the massive European king bed while drifting off to the sounds of the waves (or the vinyl record player). Complemented perfectly by brass nautical finishings throughout, there's also a fully stocked, in-room bar, an indoor Peek-a-Boo shower with an iridescent dichroic glass window for a peek into the room and an outdoor Peek-a-View shower facing the sea, near the terrace Champagne table and sun lounger. Sleeps up to four.

<b>INTERIOR:</b> 396 square feet / 36.79 square meters
<b>TERRACE:</b> 174 square feet / 16.17 square meters
<b>ACCESSIBLE INTERIOR:</b> 396 square feet / 36.79 square meters
<b>ACCESSIBLE TERRACE:</b> 174 square feet / 16.17 square meters
<b>LOCATION:</b> Deck 15
<b>POSITION:</b> FWD
<b>TOTAL COUNT / ACCESSIBLE:</b> 9 / 1

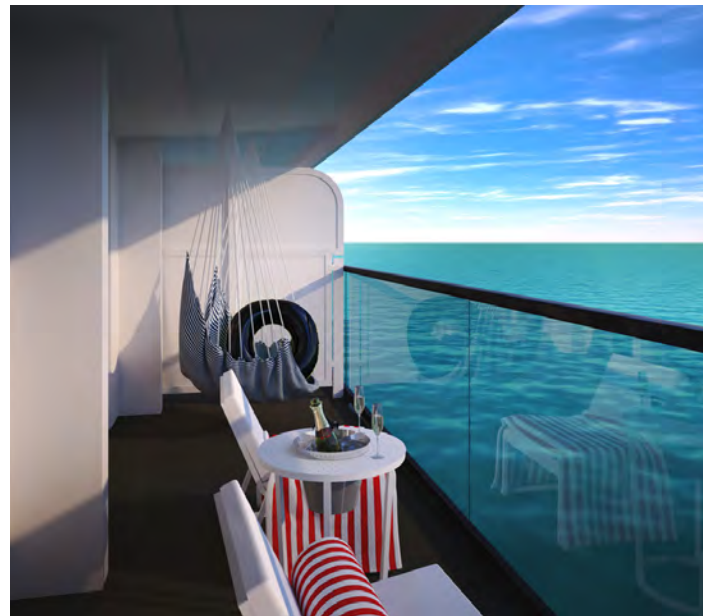
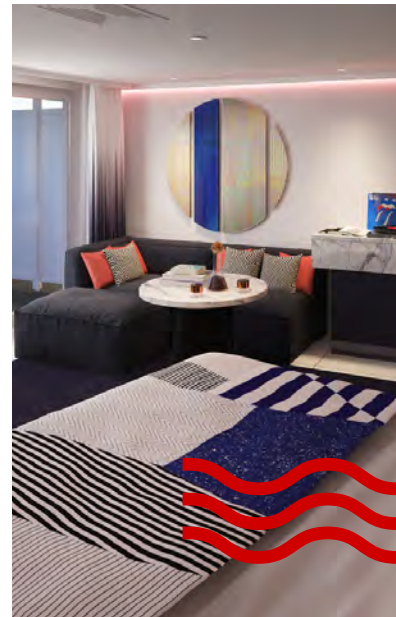
<b>UNIQUE CALL-OUTS:</b>
In-room glam brass vanity station
L-shaped sofa (converts to sleep mode for 2)
Terrace sun loungers

<b>HEROES:</b>
Terrace hammock
European king bed
Large marble bathroom with indoor Peek-a-Boo shower
Mood lighting
Champagne table
Fully stocked, in-room bar
Outdoor Peek-a-View shower

<b>BRILLIANT BASICS:</b>
Tom Dixon-designed suite
Glam area
Clever cabin technology
In-room entertainment: (1) 55" 4K TV
Steamer & hairdryer
In-room safe (fits 17" laptop)
More wardrobe space
Premium bathroom amenities
Upgraded linens
Vinyl record player
Plush robes

**I'm ready for my  
close-up.**

Call The Cruise Village • 0800 810 8481



## BRILLIANT SUITE (SB)

Whether a Sailor's rider specifies 1000 candy bars, a rare-aged gin, or 1 penguin (try us), inner rockers will come alive in this suite. With a view of the European king bed from the indoor Peek-a-Boo indoor shower through a dichroic glass window, the only sensual rival is the ocean itself. Sailors can crank up the tunes from the record player, serve up some drinks from the fully stocked in-room bar, then take the party to the terrace to enjoy more stunning sea views while relaxing around the Champagne table. Sleeps up to four.

**INTERIOR:** 396 square feet / 36.79 square meters

**TERRACE:** 85.7 square feet / 7.96 square meters

**LOCATION:** Deck 14

**POSITION:** MID

**TOTAL COUNT / ACCESSIBLE:** 18 / 0

### HEROES:

Terrace hammock

European king bed

Large marble bathroom with indoor Peek-a-Boo shower

Mood lighting

Champagne table

Fully stocked, in-room bar

### UNIQUE CALL-OUTS:

In-room glam brass vanity station

L-shaped sofa (converts to sleep mode for 2)

Terrace sun chairs

### BRILLIANT BASICS:

Tom Dixon-designed suite

Glam area

Clever cabin technology

In-room entertainment: (1) 55" 4K TV

Steamer & hairdryer

In-room safe (fits 17" laptop)

More wardrobe space

Premium bathroom amenities

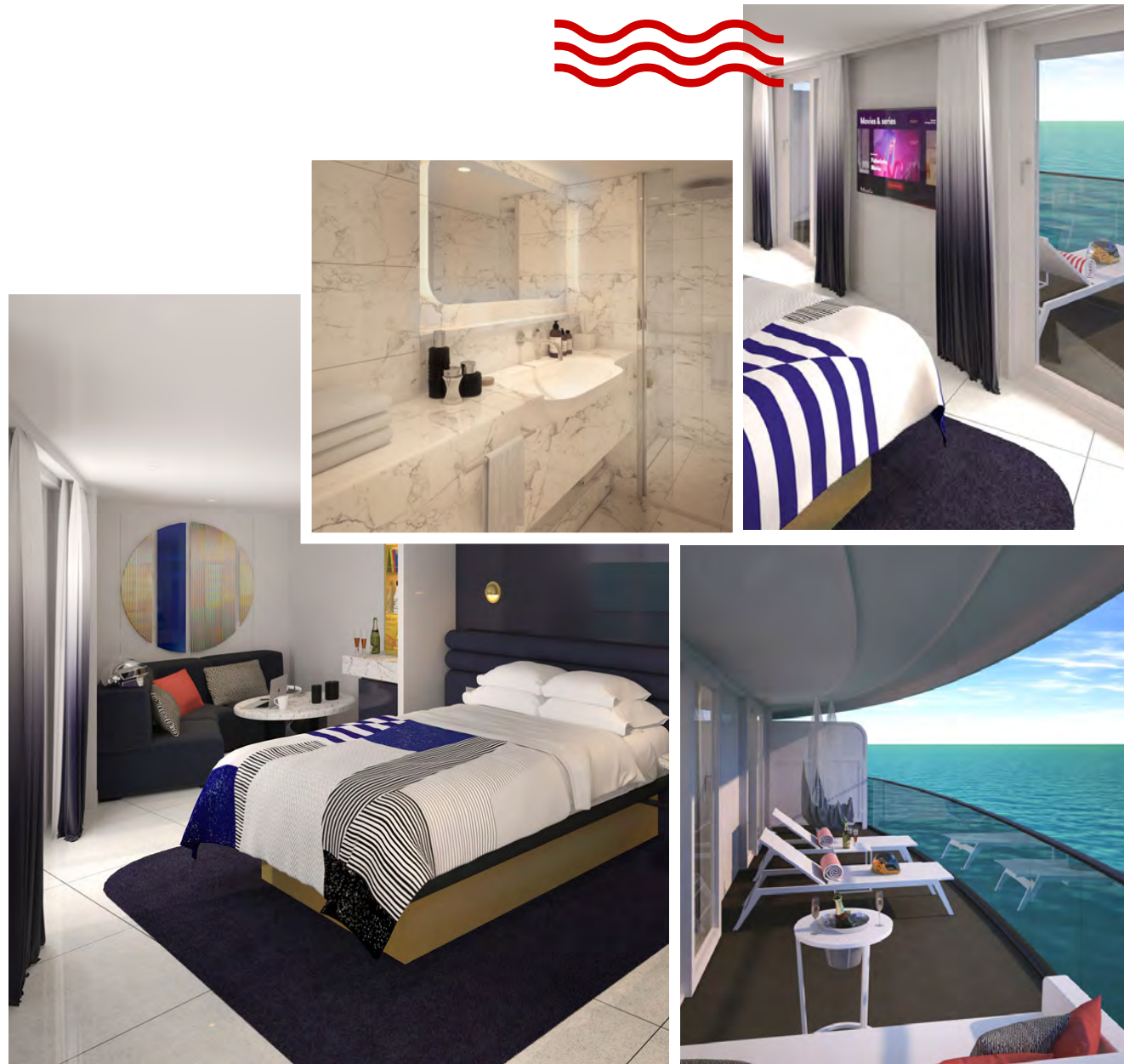
Upgraded linens

Vinyl record player

Plush robes

# Release your inner RockStar.

Call The Cruise Village • 0800 810 8481



**CHEEKY CORNER SUITE –  
BIGGEST TERRACE (SCB)  
EVEN BIGGER TERRACE (SCE)  
PRETTY BIG TERRACE (SCP)**

Wrapping panoramic views from the corner of the ship are emphasized by design choices in these suites. Enjoy custom interior carbon fiber chairs on this terrace, meant to maximize sea views – in this case, the wake view. Sailors will gaze at the sea while relaxing near the gorgeous outdoor Champagne table or kicking back in the hand-woven hammock chair. After they’ve finished soaking in the views, Sailors can indulge in some classics with their vinyl record player and a personalized, fully stocked, in-room bar. Then they’ll freshen up in the expansive top to bottom marble bathroom featuring the Roomiest Rainshower. Sleeps up to two.

<b>INTERIOR:</b> 311 square feet / 28.89 square meters
<b>BIGGEST TERRACE (SCB):</b> 442.42 - 536.8 square feet / 41.1 - 49.87 square meters
<b>EVEN BIGGER TERRACE (SCE):</b> 349 - 397 square feet / 32.42 - 36.88 square meters
<b>PRETTY BIG TERRACE (SCP):</b> 304 - 306.5 square feet / 28.24 - 28.47 square meters
<b>LOCATION:</b> (SCB) Decks 12, 13, 14 (SCE) Decks 10, 11 (SCP) Decks 8, 9
<b>POSITION:</b> AFT
<b>TOTAL COUNT / ACCESSIBLE:</b> 14 / 0

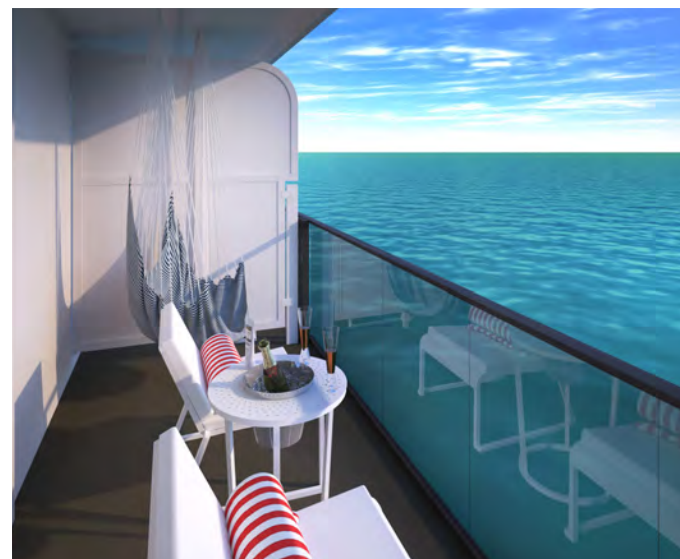
<b>UNIQUE CALL-OUTS:</b>
In-room glam brass vanity station
Corner sofa
Terrace sofa or sun loungers
3-door wardrobe for extra space
Interconnecting door with adjacent Sea Terrace

<b>HEROES:</b>
Terrace hammock
European king bed
Roomiest Rainshower
Large marble bathroom
Mood lighting
Champagne table
Fully stocked, in-room bar

<b>BRILLIANT BASICS:</b>
Tom Dixon–designed suite
Glam area
Clever cabin technology
In-room entertainment: (1) 55" 4K TV
Steamer & hairdryer
In-room safe (fits 17" laptop)
More wardrobe space
Premium bathroom amenities
Upgraded linens
Vinyl record player
Plush robes

**That corner office  
you’ve wanted.  
But better.**

Call The Cruise Village • 0800 810 8481



## SERIOUSLY SUITE (SS)

Full stocked, in-room bar. Check. Record player ready to spin favorite tunes. Double check. This suite is ideal for those who are serious about living life to the fullest. With plenty of room to take in the mesmerizing ocean views from any corner, luxury and self-care become serious art forms here. From the hand-woven hammock on the terrace to the outdoor champagne table and indoor Peek-a-Boo shower, this suite is the perfect place for bottle poppin' and voyage rockin'. Sleeps up to two.

<b>INTERIOR:</b> 284 square feet / 26.38 square feet
<b>TERRACE:</b> 68 square feet / 6.32 square meters
<b>ACCESSIBLE INTERIOR:</b> 287 square feet / 26.66 square feet
<b>ACCESSIBLE TERRACE:</b> 68 square feet / 6.32 square meters
<b>LOCATION:</b> Deck 12
<b>POSITION:</b> MID
<b>TOTAL COUNT / ACCESSIBLE:</b> 24 / 1

HEROES:
Terrace hammock
European king bed
Roomiest Rainshower
Large marble bathroom
Mood lighting
Champagne table
Fully stocked, in-room bar

UNIQUE CALL-OUTS:
In-room glam brass vanity station
Terrace sun chairs
3-door wardrobe for extra space

BRILLIANT BASICS:
Tom Dixon-designed suite
Glam area
Clever cabin technology
In-room entertainment: (1) 55" 4K TV
Steamer & hairdryer
In-room safe (fits 17" laptop)
More wardrobe space
Premium bathroom amenities
Upgraded linens
Vinyl record player
Plush robes

**This is  
not a drill.**

Call The Cruise Village • 0800 810 8481





**SWEET AFT SUITE –  
BIGGEST TERRACE (SAB)  
EVEN BIGGER TERRACE (SAE)  
PRETTY BIG TERRACE (SAP)**

With endless back-of-the-ship, ocean eye candy, there's no such thing as a bad view in this suite. Sailors can kick back here (the highest and biggest terrace of the Sweet Afts) while lounging in the hand-woven hammock chair or relaxing around the Champagne table. After freshening up and soaking in the sunlight provided by the indoor Peek-a-Boo shower the fully stocked, in-room bar and record player are the only things needed to get the party started. Sleeps up to two.

<b>INTERIOR:</b> 236 square feet / 21.93 square meters
<b>BIGGEST TERRACE (SAB):</b> 321.8 - 425 square feet / 29.90 - 39.48 square meters
<b>EVEN BIGGER TERRACE (SAE):</b> 223.6 - 268 square feet / 20.77 - 24.9 square meters
<b>PRETTY BIG TERRACE (SAP):</b> 180 - 182 square feet / 16.72 - 16.91 square meters
<b>LOCATION:</b> (SAB) Decks 12, 13, 14 (SAE) Decks 10, 11 (SAP) Decks 8, 9
<b>POSITION:</b> AFT
<b>TOTAL COUNT / ACCESSIBLE:</b> 7 / 0

<b>UNIQUE CALL-OUTS:</b>
In-room glam brass vanity station
Terrace sun loungers
Peek-A-Boo shower looks directly out to terrace
Central aft views

<b>HEROES:</b>
Terrace hammock
European king bed
Roomiest Rainshower
Large marble bathroom
Mood lighting
Champagne table
Fully stocked, in-room bar

<b>BRILLIANT BASICS:</b>
Tom Dixon-designed suite
Glam area
Clever cabin technology
In-room entertainment: (1) 55" 4K TV
Steamer & hairdryer
In-room safe (fits 17" laptop)
More wardrobe space
Premium bathroom amenities
Upgraded linens
Vinyl record player
Plush robes

**Baby got aft.**

Call The Cruise Village • 0800 810 8481

# CABINS

Designed with a Sailor's many moods in mind, our cabins are revolutionizing ship design to create a personal retreat complete with modern aesthetics, yacht-like sensibilities and functional living space. The ultimate go-to for relaxation and rejuvenation, our cabins stand out for the flexible furnishings, upgraded bathrooms with Roomy Rainshowers and sensory mood lighting, creating comfy quarters that are way more than just a place to crash.

Call The Cruise Village • 0800 810 8481





## XL SEA TERRACE (TX)

Just picture everything The Sea Terrace has, with more room space and a way bigger bathroom. Our biggest of all cabins actually. Perfect for those who make getting ready a serious art. A sensory and responsive clever cabin, nautically inspired brass and leather finishings, a personal tablet, intuitive mood lighting, music controls, movie streaming, one-touch room service and a supremely comfy European queen, transitional Seabed. Plus the large, perfectly partitioned, upgraded walk-in bathroom has enough space for two. Even the Roomier Rainshower boasts just the right amount of space for some “we” time. Sleeps up to three.

<b>INTERIOR:</b> 225 square feet / 20.9 square meters
<b>TERRACE:</b> 40.3 square feet / 3.74 square meters
<b>ACCESSIBLE INTERIOR:</b> 326.8 square feet / 30.36 square meters
<b>ACCESSIBLE TERRACE:</b> 68 square feet / 6.32 square meters
<b>LOCATION:</b> Decks 8, 9, 10, 11, 12, 13, 14
<b>POSITION:</b> FWD
<b>TOTAL COUNT / ACCESSIBLE:</b> 112 / 2

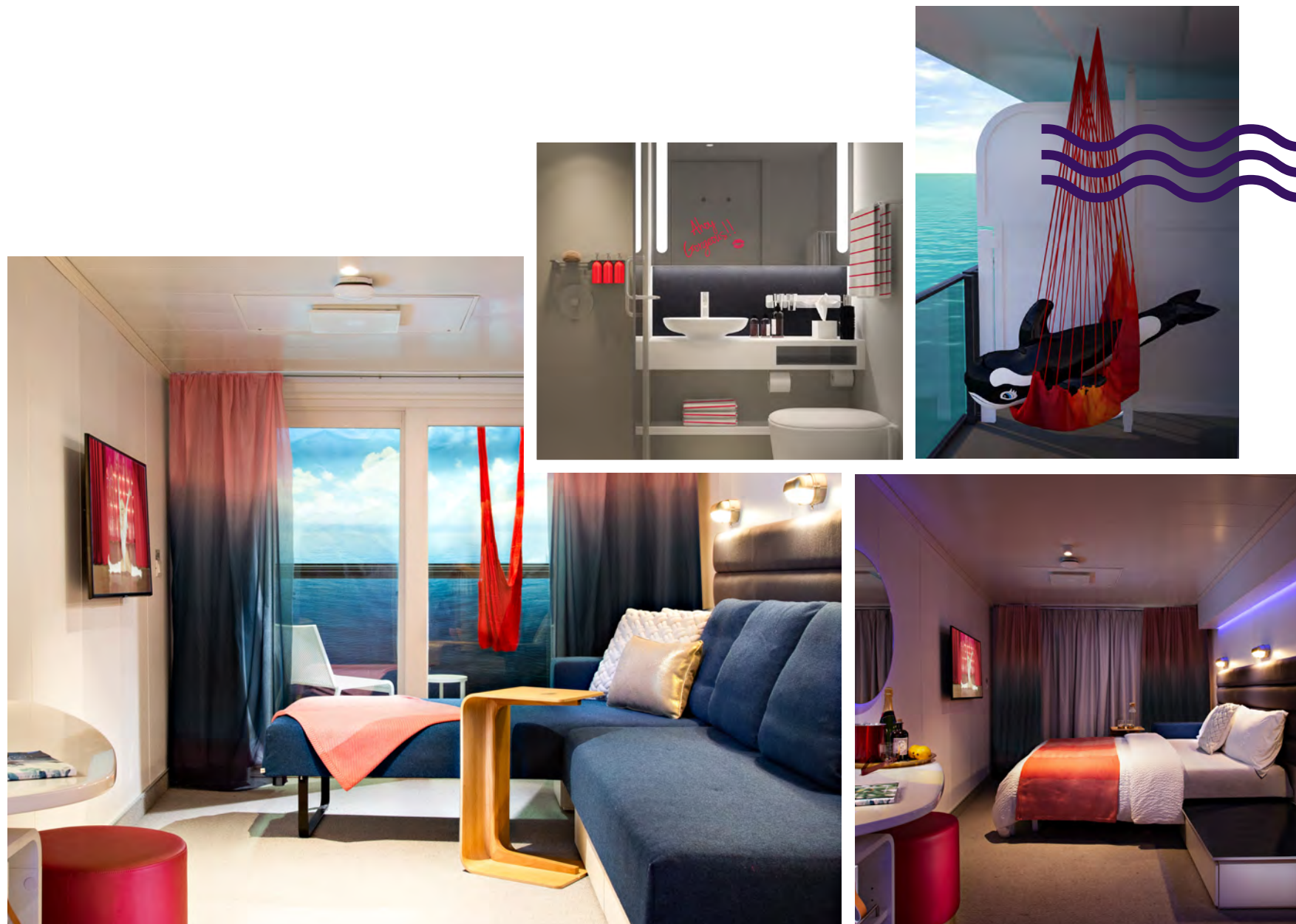
HEROES:
Terrace hammock
Seabed
Roomier Rainshower
Mood lighting

UNIQUE CALL-OUTS:
Larger bathroom and cabin space
Saddle leather lounge chair
Champagne table
Enclosed private toilet

BRILLIANT BASICS:
Glam area
Clever cabin technology
In-room entertainment (43" 4K TV)
Steamer & hairdryer
In-room safe (fits 17" laptop)
Flexible wardrobe for luggage and clothes
Mini bar
Plugs/USBs in all the right places

**Extra is our  
middle name.**

Call The Cruise Village • 0800 810 8481



## CENTRAL SEA TERRACE (TC)

For Sailors who prefer to be mid ship, this cabin has all the comforts and amenities of The Sea Terrace, but is positioned closer to the action. Featuring nautically inspired brass and leather finishings, this sensory and responsive clever cabin has it all from the personal tablet, intuitive mood lighting, music controls, movie streaming, one-touch room service, European queen, transitional Seabed, hand-woven terrace hammock and upgraded bathroom experience with a Roomy Rainshower. Sleeps up to three.

<b>INTERIOR:</b> 185 square feet / 17.19 square meters
<b>TERRACE:</b> 40.3 square feet / 3.75 square meters
<b>ACCESSIBLE INTERIOR:</b> 288 square feet / 26.76 square meters
<b>ACCESSIBLE TERRACE:</b> 68 square feet / 6.3 square meters
<b>LOCATION:</b> Decks 8, 9, 10, 11, 12, 13, 14
<b>POSITION:</b> MID
<b>TOTAL COUNT / ACCESSIBLE:</b> 524 / 20

HEROES:
Terrace hammock
Seabed
Roomy Rainshower
Mood lighting

UNIQUE CALL-OUTS:
Centrally located midship
Saddle leather lounge chair
Champagne table

BRILLIANT BASICS:
Glam area
Clever cabin technology
In-room entertainment (43" 4K TV)
Steamer & hairdryer
In-room safe (fits 17" laptop)
Flexible wardrobe for luggage and clothes
Mini bar
Plugs/USBs in all the right places

**We can't help if  
we're the center of  
attention.**

Call The Cruise Village • 0800 810 8481



## THE SEA TERRACE (TR)

Epic ocean views, whether Sailors are inside on the European queen, transitional Seabed or dangling from the sustainable sourced, hand-woven terrace hammock. Complete with nautically inspired brass and leather finishings, Sailors will enjoy this sensory and responsive clever cabin. Just pick up the personal tablet to adjust the mood lighting, music controls, movie streaming or even one-touch room service. Sea gaze outside or head in to freshen up under the Roomy Rainshower in the upgraded bathroom experience. Sleeps up to four.

<b>INTERIOR:</b> 185 square feet / 17.19 square meters
<b>TERRACE:</b> 40.3 square feet / 3.74 square meters
<b>LOCATION:</b> Decks 8, 9, 10, 11, 12, 13, 14
<b>POSITION:</b> FWD / AFT
<b>TOTAL COUNT / ACCESSIBLE:</b> 416 / 0

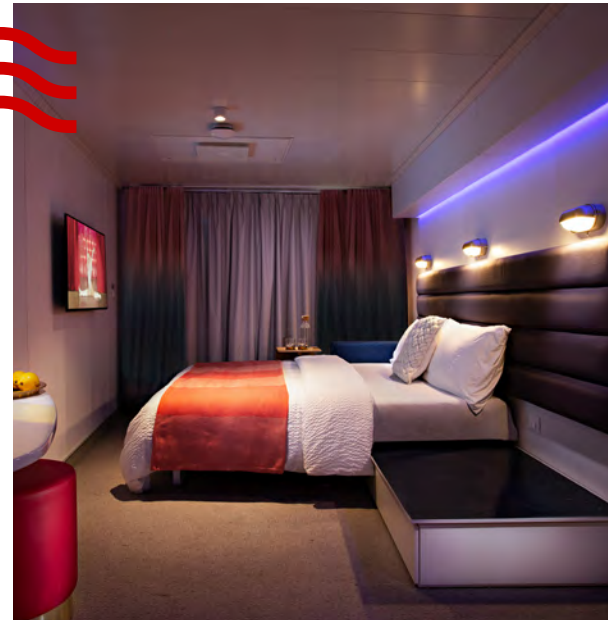
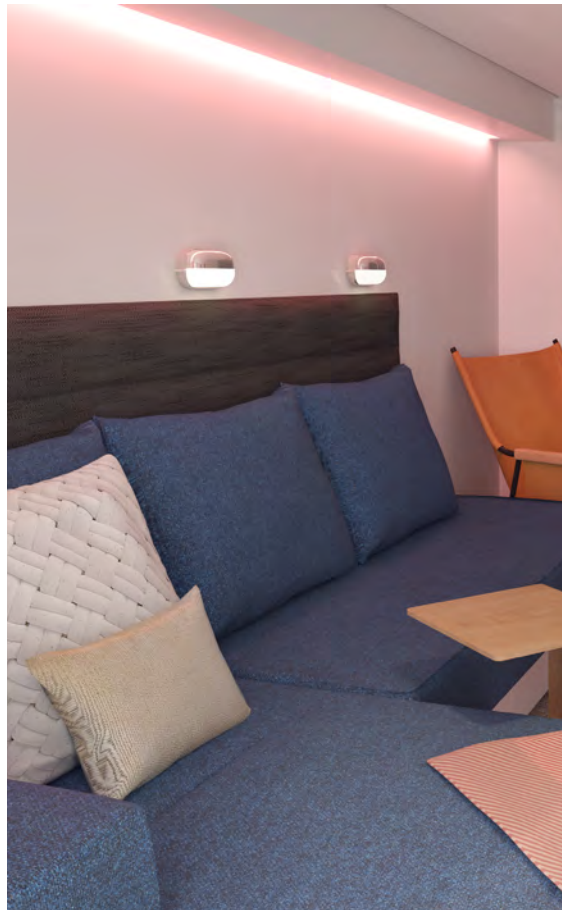
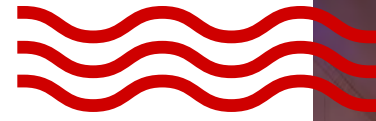
<b>HEROES:</b>
Terrace hammock
Seabed
Roomy Rainshower
Mood lighting

<b>UNIQUE CALL-OUTS:</b>
Saddle leather lounge chair
Champagne table

<b>BRILLIANT BASICS:</b>
Glam area
Clever cabin technology
In-room entertainment (43" 4K TV)
Steamer & hairdryer
In-room safe (fits 17" laptop)
Flexible wardrobe for luggage and clothes
Mini bar
Plugs/USBs in all the right places

**As far as the  
eye can sea.**

Call The Cruise Village • 0800 810 8481



## LTD VIEW SEA TERRACE (TL)

All the comforts and amenities of The Sea Terrace with a slightly limited view because, well, shippy stuff. Otherwise, this sensory and responsive clever cabin has it all from nautically inspired brass and leather finishings to the personal tablet, intuitive mood lighting, music controls, movie streaming and one-touch room service. Sailors will relax on the European queen, transitional Seabed or the sustainably sourced, hand-woven terrace hammock. Not in the outdoor mood? No problem, refresh and relax under the Roomy Rainshower in the upgraded bathroom experience. Sleeps up to four.

<b>INTERIOR:</b> 185 square feet / 17.19 square meters
<b>TERRACE:</b> 40.3 square feet / 3.74 square meters
<b>LOCATION:</b> Deck 8
<b>POSITION:</b> FWD / MID / AFT
<b>TOTAL COUNT / ACCESSIBLE:</b> 78 / 0

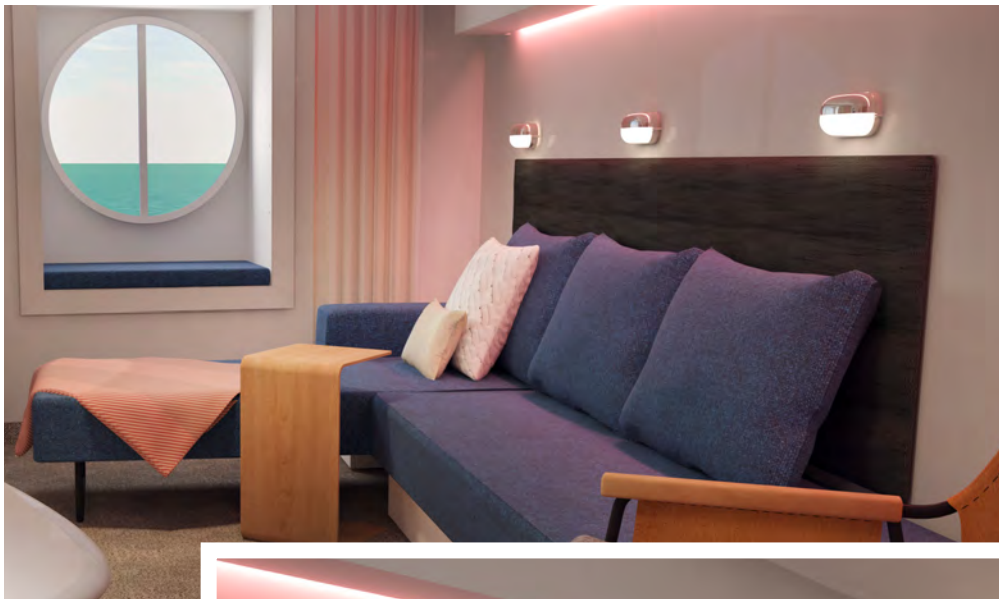
HEROES:
Terrace hammock
Seabed
Roomy Rainshower
Mood lighting

UNIQUE CALL-OUTS:
Obstructed view
Saddle leather lounge chair
Champagne table

BRILLIANT BASICS:
Glam area
Clever cabin technology
In-room entertainment (43" 4K TV)
Steamer & hairdryer
In-room safe (fits 17" laptop)
Flexible wardrobe for luggage and clothes
Mini bar
Plugs/USBs in all the right places

**It's all about perspective.**

Call The Cruise Village • 0800 810 8481



## THE SEA VIEW (VW)

Views on views minus the messy hair. This cabin has all the amenities of cabin life with a window seat that's the closest Sailors can get to the ocean without getting wet (save that for the pool party). Sleeps up to three.

<b>INTERIOR:</b> 189.5 square feet / 17.61 square meters
<b>ACCESSIBLE INTERIOR:</b> 288 square feet / 26.76 square meters
<b>LOCATION:</b> Decks 5, 9, 10, 11, 12
<b>POSITION:</b> FWD / MID
<b>TOTAL COUNT / ACCESSIBLE:</b> 89 / 3

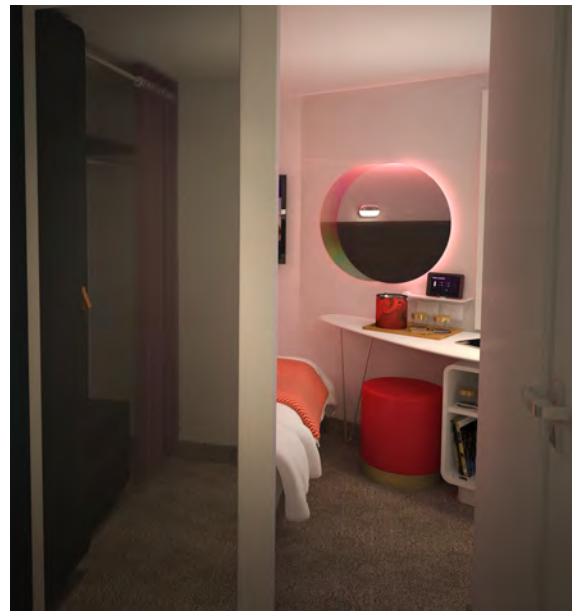
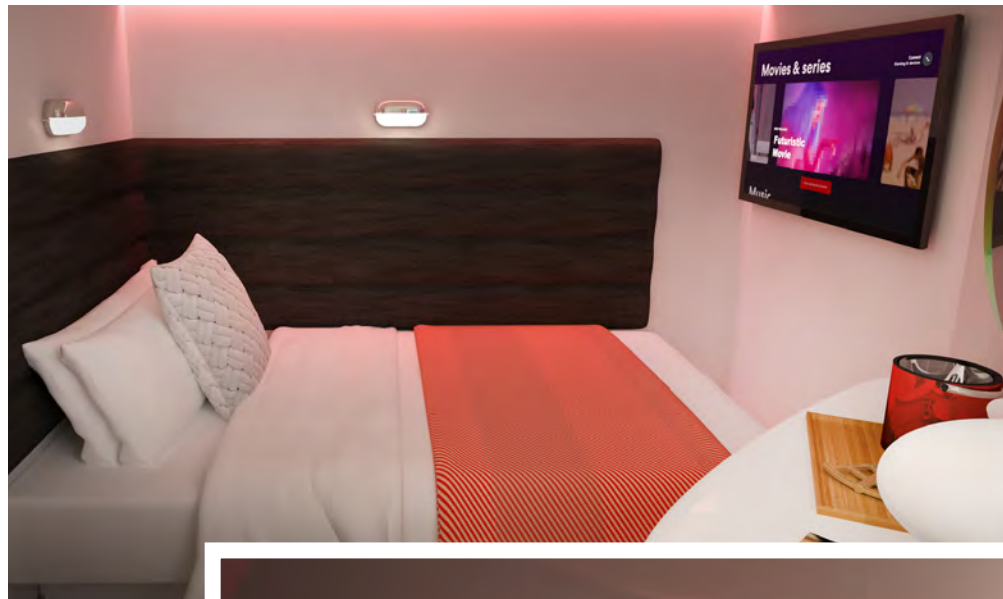
<b>HEROES:</b>
Seabed
Roomy Rainshower
Mood lighting

<b>UNIQUE CALL-OUTS:</b>
Window seat

<b>BRILLIANT BASICS:</b>
Glam area
Clever cabin technology
In-room entertainment (43" 4K TV)
Steamer & hairdryer
In-room safe (fits 17" laptop)
Flexible wardrobe for luggage and clothes
Mini bar
Plugs/USBs in all the right places

# Sea and be seen.

Call The Cruise Village • 0800 810 8481



## SOLO SEA VIEW (V1)

Views on views minus the messy hair. Sailors will enjoy all the amenities of cabin life while watching the waves from a personal hideaway. It's the closest Sailors can get to the ocean without getting wet (save that for the pool party). Sleeps one.

<b>INTERIOR:</b> 130.2 square feet / 12.10 square meters
<b>LOCATION:</b> Decks 9, 12
<b>POSITION:</b> FWD
<b>TOTAL COUNT / ACCESSIBLE:</b> 6 / 0

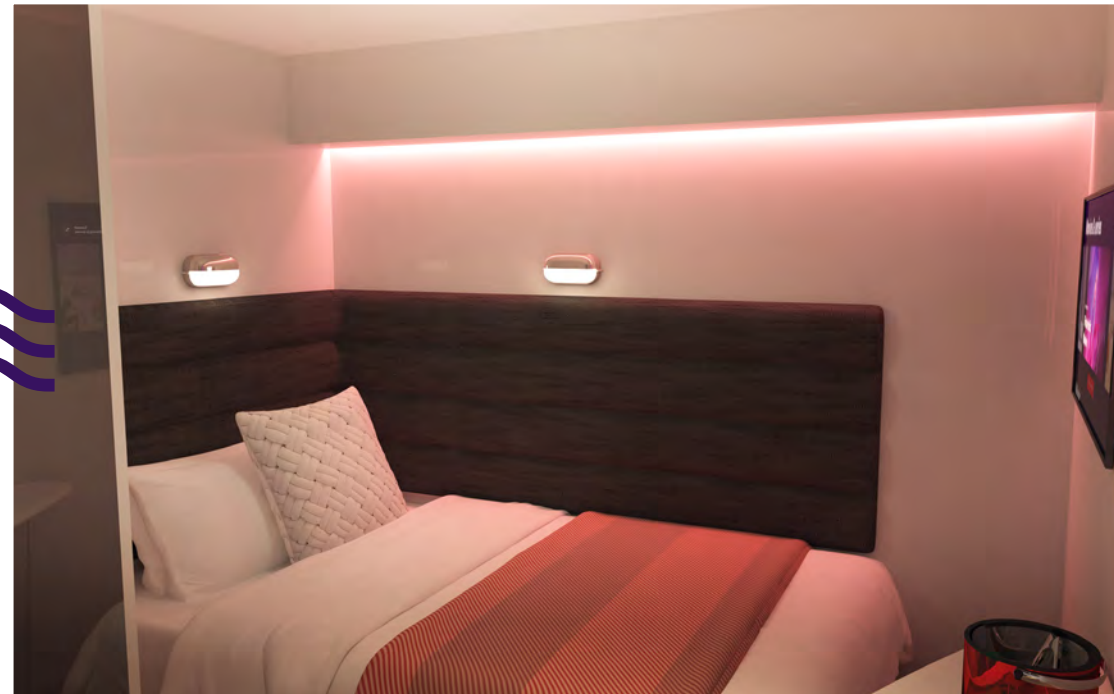
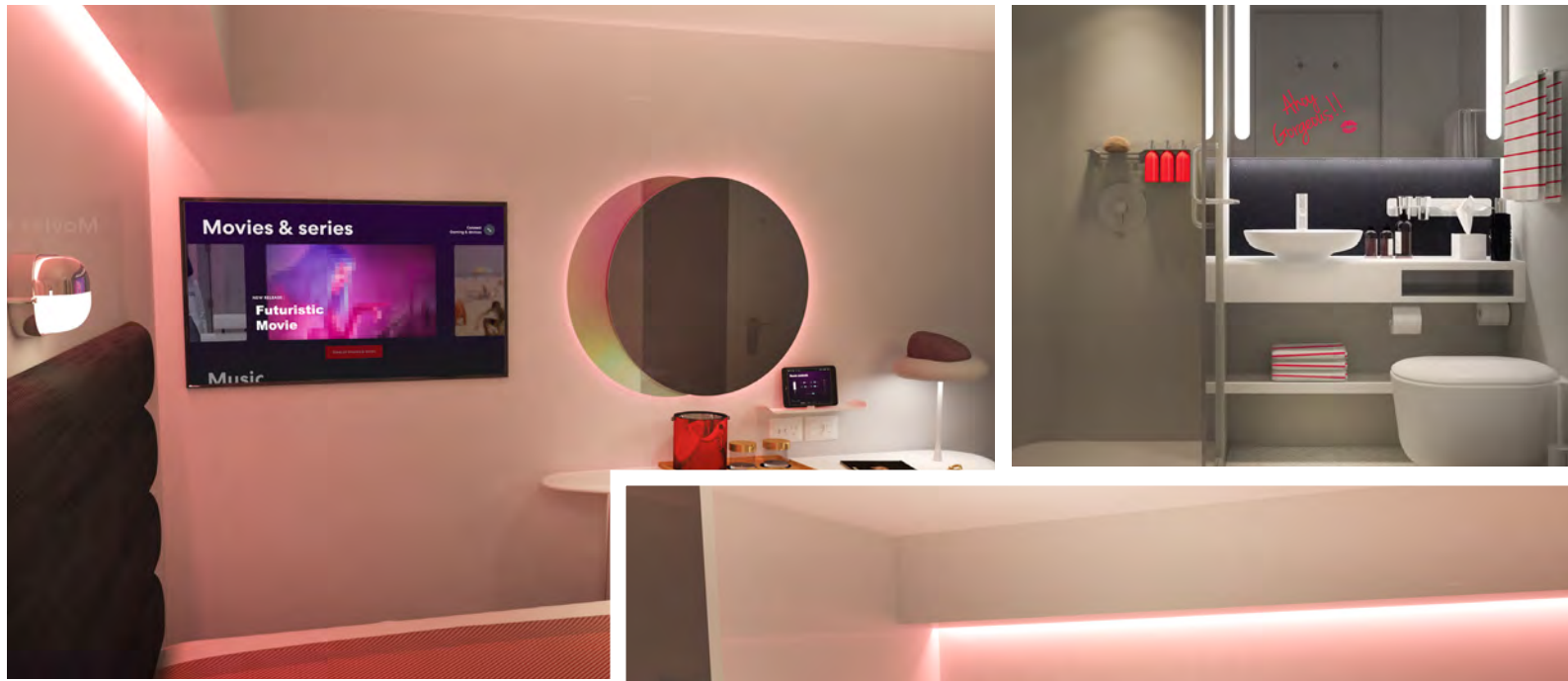
HEROES:
Big window
Super large single bed
Roomy Rainshower
Mood lighting

BRILLIANT BASICS:
Glam area
Clever cabin technology
In-room entertainment (43" 4K TV)
Steamer & hairdryer
In-room safe (fits 17" laptop)
Flexible wardrobe for luggage and clothes
Mini bar
Plugs/USBs in all the right places

**I'm a loner,**  
**dottie. A rebel.**

Call The Cruise Village • 0800 810 8481





# A strong, independent cabin that don't need no windows.

Call The Cruise Village • 0800 810 8481

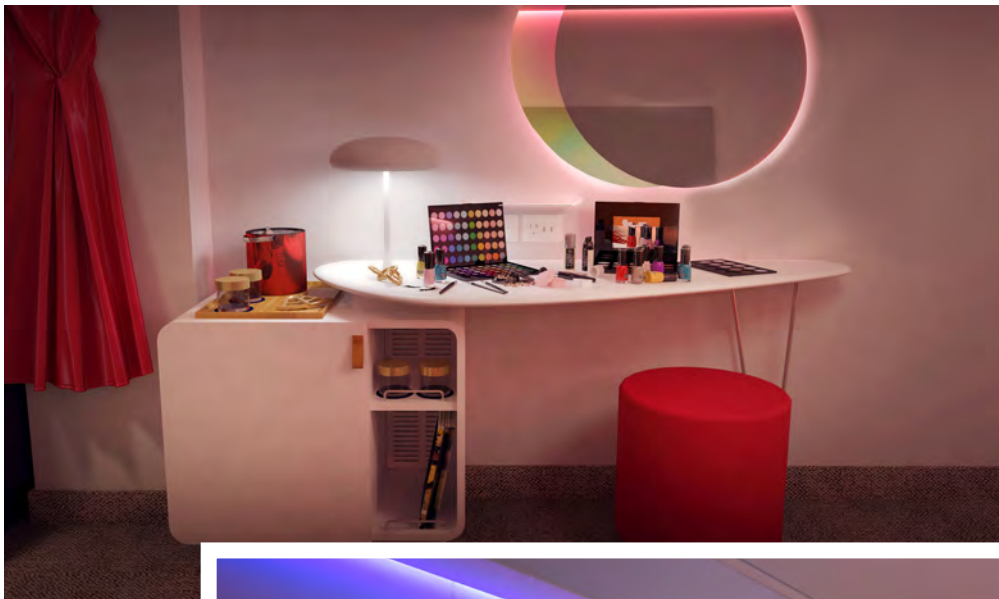
## SOLO INSIDER (11)

This cocoon-like cabin is perfect for fans of late nights and sleeping in until after lunch. It's super cozy and ideal for solo travelers. Standard cabin amenities, check. No window, no problem. Sleeps one.

<b>INTERIOR:</b> 105 square feet / 9.75 square meters
<b>LOCATION:</b> Decks 5, 8, 11, 12, 13, 14
<b>POSITION:</b> MID
<b>TOTAL COUNT / ACCESSIBLE:</b> 40 / 0

<b>HEROES:</b>
Super large single bed
Roomy Rainshower
Mood lighting

<b>BRILLIANT BASICS:</b>
Glam area
Clever cabin technology
In-room entertainment (43" 4K TV)
Steamer & hairdryer
In-room safe (fits 17" laptop)
Flexible wardrobe for luggage and clothes
Mini bar
Plugs/USBs in all the right places



## THE INSIDER (IN)

Nightlife type who prefers to catch Z's without the morning sun peeking through the blinds? Then this window-free cabin will be perfect. Add in all the amenities of other cabins, just subtract the pesky glare. Sleeps up to three.

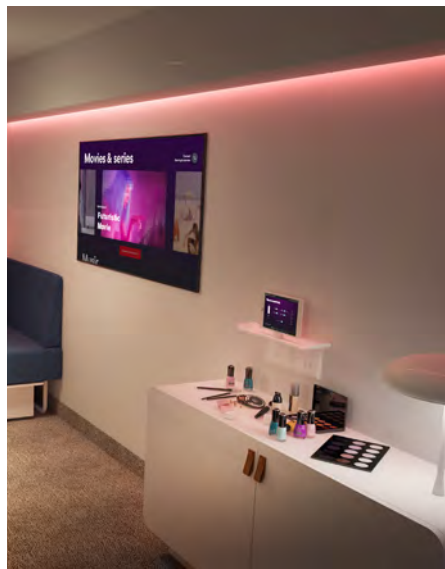
<b>INTERIOR:</b> 177 square feet / 16.44 square meters
<b>ACCESSIBLE INTERIOR:</b> 258.4 square feet / 24.01 square meters
<b>LOCATION:</b> Decks 5, 9, 10, 11, 12, 13, 14
<b>POSITION:</b> FWD / MID / AFT
<b>TOTAL COUNT / ACCESSIBLE:</b> 55 / 2

<b>HEROES:</b>
Seabed
Roomy Rainshower
Mood lighting

<b>BRILLIANT BASICS:</b>
Glam area
Clever cabin technology
In-room entertainment (43" 4K TV)
Steamer & hairdryer
In-room safe (fits 17" laptop)
Flexible wardrobe for luggage and clothes
Mini bar
Plugs/USBs in all the right places

# Nice and cozy.

Call The Cruise Village • 0800 810 8481



## SOCIAL INSIDER (I4)

Built for groups of Sailors, what happens inside this cabin, stays inside (because it's sans windows). The bunk beds go from sleep to sit in no time while the amenities in this sensory and responsive clever cabin match that of all other cabins, except the way bigger TV. Sleeps up to four.

<b>INTERIOR:</b> 177 square feet / 16.44 square meters
<b>LOCATION:</b> Deck 5
<b>POSITION:</b> MID
<b>TOTAL COUNT / ACCESSIBLE:</b> 10 / 0

<b>HEROES:</b>
2 bunk beds (4 single beds)
Roomy Rainshower
Mood lighting

<b>UNIQUE CALL-OUTS:</b>
Game console

<b>BRILLIANT BASICS:</b>
Glam area
Clever cabin technology
In-room entertainment (50" 4K TV)
Steamer & hairdryer
In-room safe (fits 17" laptop)
Flexible wardrobe for luggage and clothes
Mini bar
Plugs/USBs in all the right places

# I'm with the band.

Call The Cruise Village • 0800 810 8481