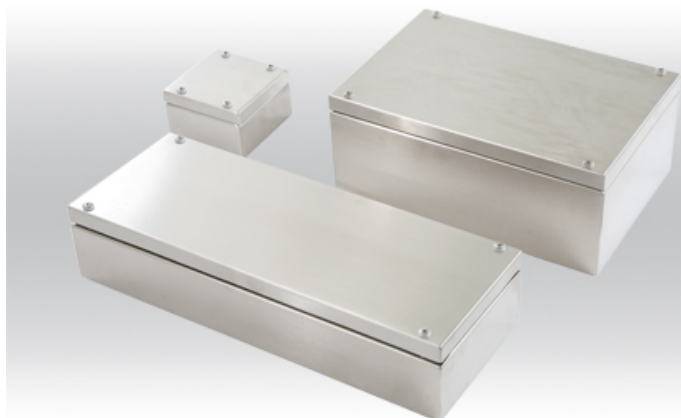


## Stainless steel industrial



- + Universal industrial enclosures for hygienic areas
- + No gaps between lid/base
- + Optional individual sizes and versions from 25 off
- + Ingress protection up to IP 69K (on request)

### Included in delivery

Enclosure base with bracket clips and threaded hole for attachment of DIN rails, 4 mounting bosses with attachment holes and sealing plugs, alternatively available without fastening holes, lid with stud bolts inside and permanently attached lid screws.

### Technical data

Material:	Stainless steel 1.25 mm or 1.5 mm; 14301/304, other material on request
Certificates:	E66473
Colour:	
Ingress protection:	IP 66 to EN 60529, high pressure cleaner-resistant version (IP69K) on request
Surface:	grinded, grain 240, other surface on request
Temperature range:	VMQ (silicone) seal : -40°C to +80°C other temperature ranges on request
Other versions on request:	EMC

### Product range

Product type	Order number	Dimensions H x W x D (mm)
IG 3725	37.20 20 08	200 x 200 x 81

## Accessories

### External mounting brackets

Order number	Description of accessories
<b>37.10 50 00</b>	set = 4 pcs

### External hinges

Order number	Description of accessories
<b>37.00 00 02</b>	Set = 2 pcs

### Mounting set

Order number
<b>37.99 00 01</b>

### Mounting plate

Order number
<b>10.01 10 40</b>

## Certificates

UL 508

Lloyd Register