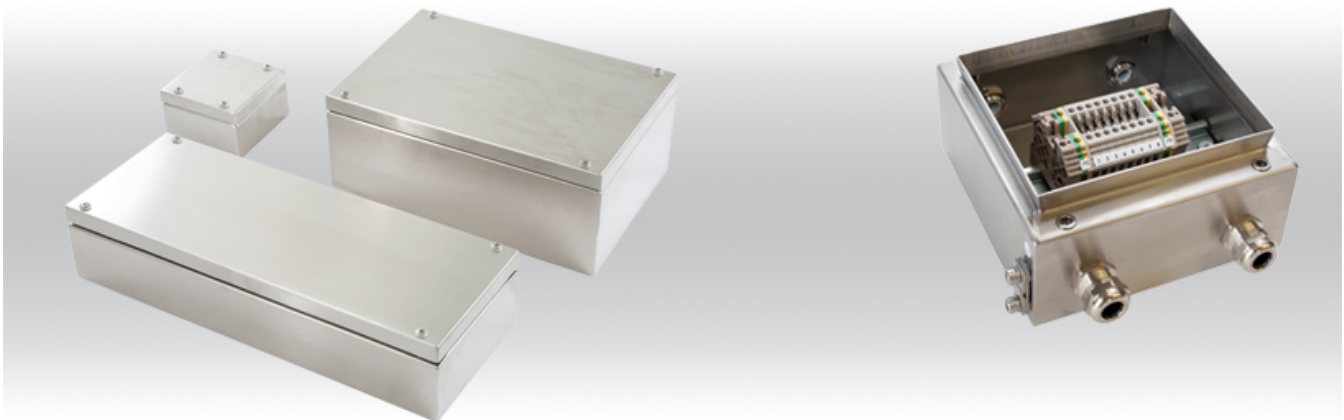


## Stainless steel industrial



- + Universal industrial enclosures for hygienic areas
- + No gaps between lid/base
- + Optional individual sizes and versions from 25 off
- + Ingress protection up to IP 69K (on request)

### Included in delivery

Enclosure base with bracket clips and threaded hole for attachment of DIN rails, 4 mounting bosses with attachment holes and sealing plugs, alternatively available without fastening holes, lid with stud bolts inside and permanently attached lid screws.

### Technical data

<b>Material:</b>	Stainless steel 1.25 mm or 1.5 mm; 14301/304, other material on request
<b>Certificates:</b>	E66473
<b>Colour:</b>	
<b>Ingress protection:</b>	IP 66 to EN 60529, high pressure cleaner-resistant version (IP69K) on request
<b>Surface:</b>	grinded, grain 240, other surface on request
<b>Temperature range:</b>	VMQ (silicone) seal : -40°C to +80°C other temperature ranges on request
<b>Other versions on request:</b>	EMC

### Product range

Product type	Order number	Dimensions H x W x D (mm)
IG 3750	<b>37.30 30 12</b>	300 x 300 x 121

## Accessories

### External mounting brackets

Order number	Description of accessories
<b>37.10 50 00</b>	set = 4 pcs

### External hinges

Order number	Description of accessories
<b>37.00 00 02</b>	Set = 2 pcs

### Mounting set

Order number
<b>37.99 00 01</b>

### Mounting plate

Order number
<b>10.01 10 44</b>

## Certificates

UL 508

Lloyd Register