

# HAUS - HUT H



POTSDAMER PLATZ



AN ARCHITECTURAL ICON

# Boutique space in a boutique building



Haus Huths interior spaces combined with its striking exterior, create an unrivaled first impression for clients, guests, and employees.







## HISTORY

Haus Huth is a former wine house of the vintner Christian Huth. Built in 1912 by architects Conrad Heidenreich and Paul Michel, it survived World War II largely undamaged and is the only historic building remaining in the entire Potsdamer Platz quarter. It was most likely saved from the war by its solid steel construction – a precaution taken to withstand the weight of storing wine. As “The Last House at Potsdamer Platz” it became a symbol of Berlin’s destruction and subsequent division. In 1990, the building was incorporated into the planning of the Potsdamer Platz project. Under the supervision of Renzo Piano and Christoph Kohlbecker, the property was completely restored from 1994 to 1999. Since then, the limestone-shell façade shines once again in its former elegance.



# A building lives many lives.



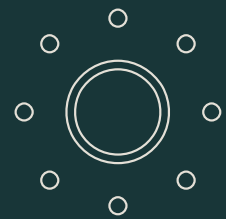
## Ceiling Heights

3.40 m on Floor 1-4  
2.55 m on Floor 5



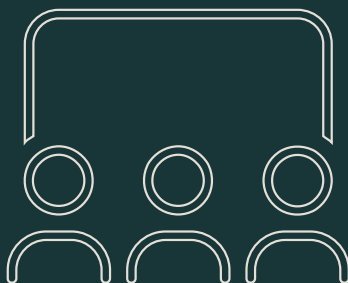
## Terrace

2 roof top terraces



## Well Lit

Highly efficient new LEDLighting



## Event Space

Wappenzimmer, flexible event space with hospitality



## Elevators

1 dedicated passenger elevator  
1 dedicated goods lift  
1 dedicated VIP elevator to parking lot



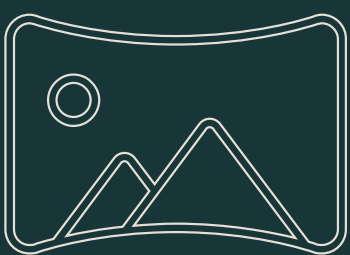
## Parking Spots

4 VIP dedicated parking spots with additional parking spots available



## Connected

Data network + telephone network with CAT 7 wiring



## 360° View

Panoramic views across Potsdamer Platz



## Showers

4 exclusive showers for Haus Huth tenants





Haus Huth Terrace

Historic. Iconic.  
Exclusive.





**STACK PLAN**

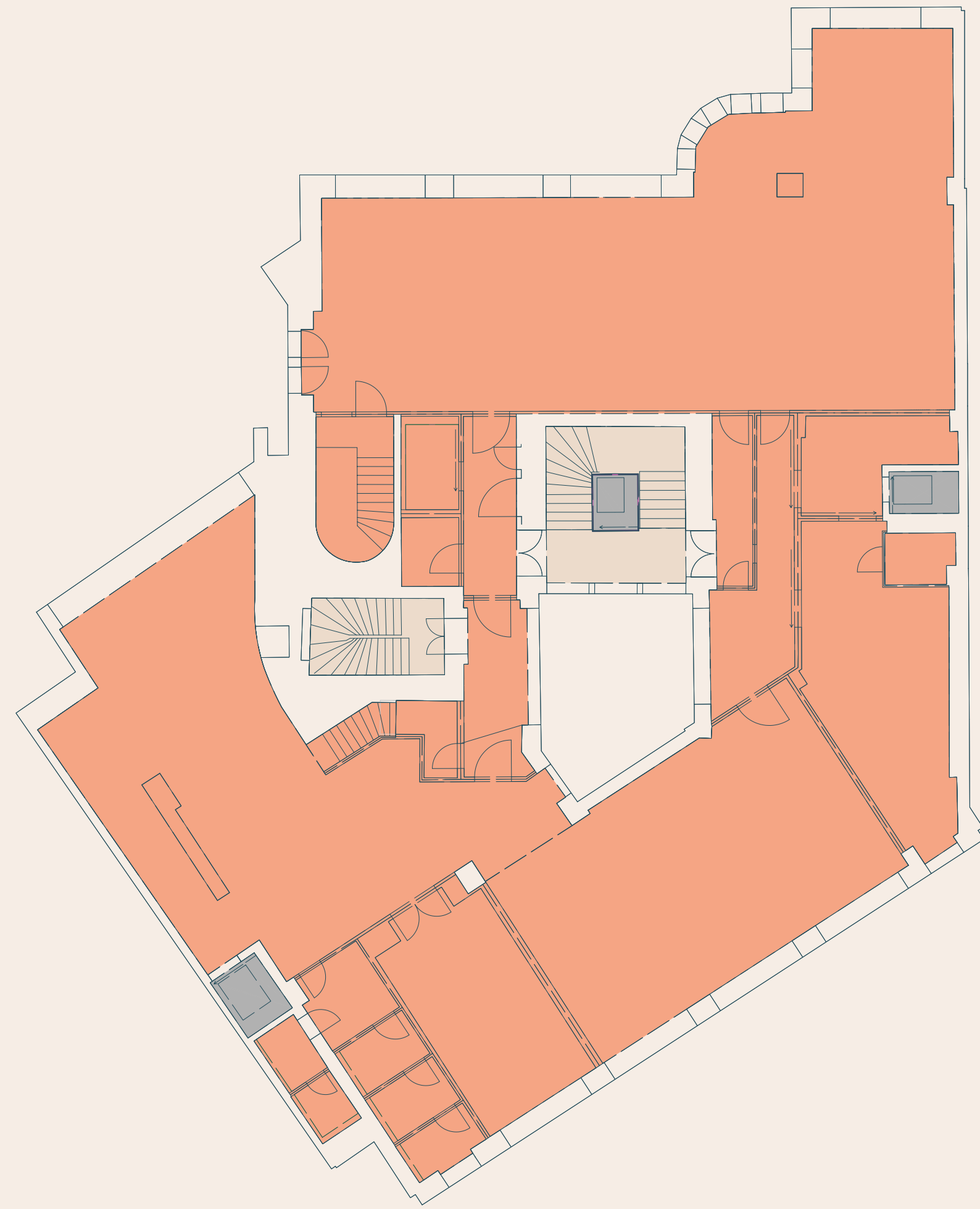


Roof Top Terrace

**2,960** sq m  
of available office space  
across 5 levels

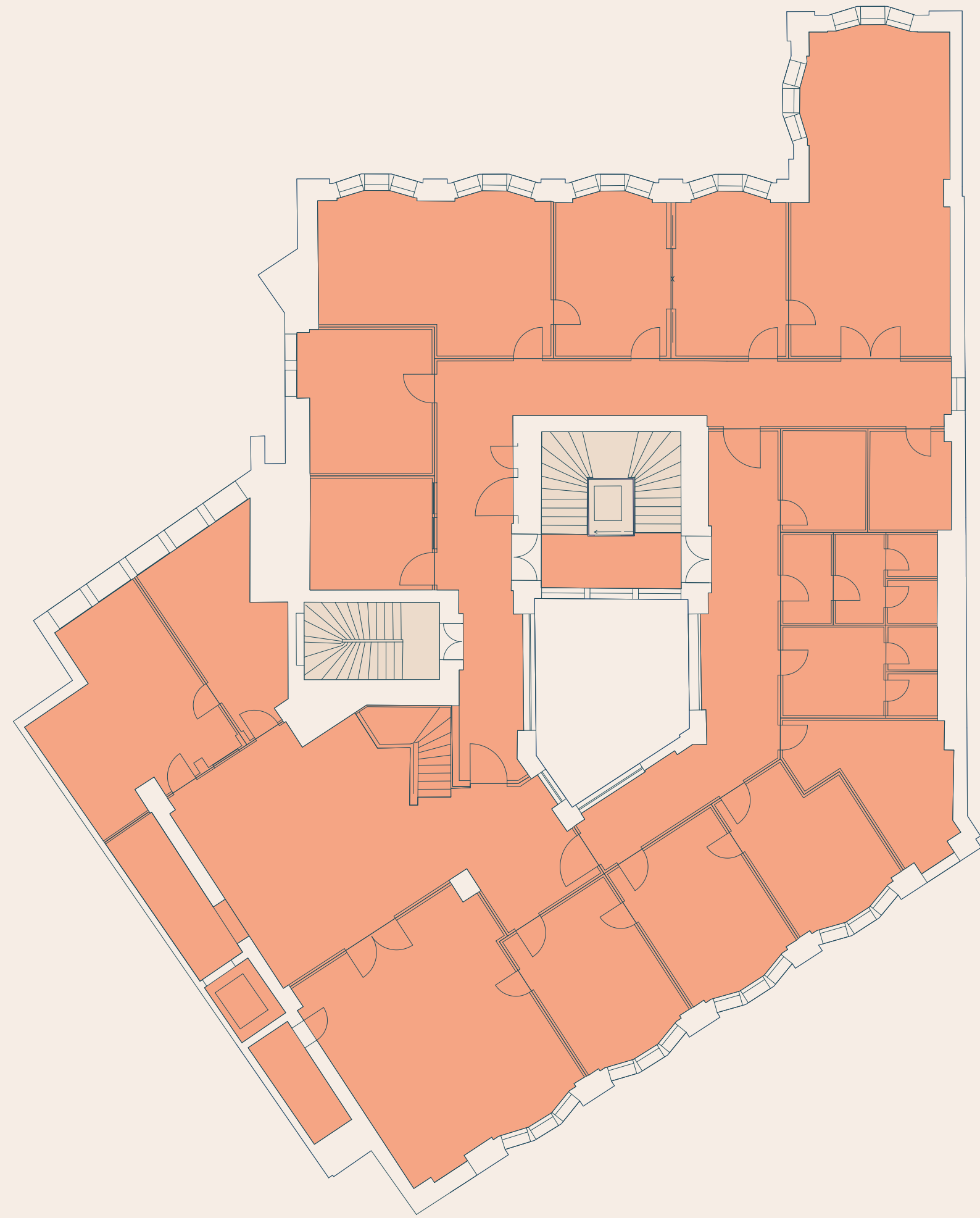
Floor	Use	Tenant / Availability	Available sq m
5	Office	Available	537
4	Office	Available	576
3	Office	Available	617
2	Office	Available	607
1	Office	Available	623
Ground	Office/Retail/Gastro	 	-



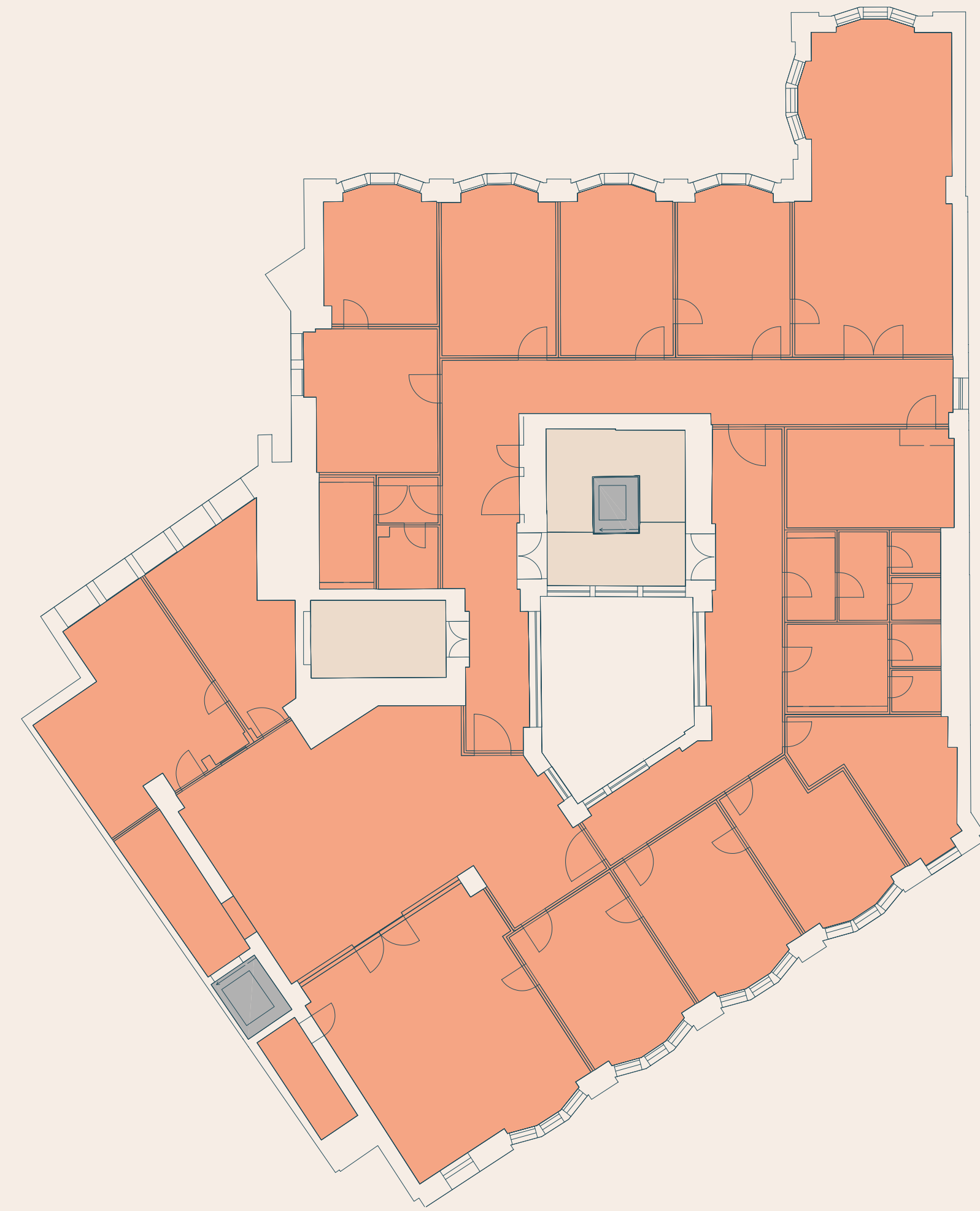


Level 1  
**623** *sq m available*



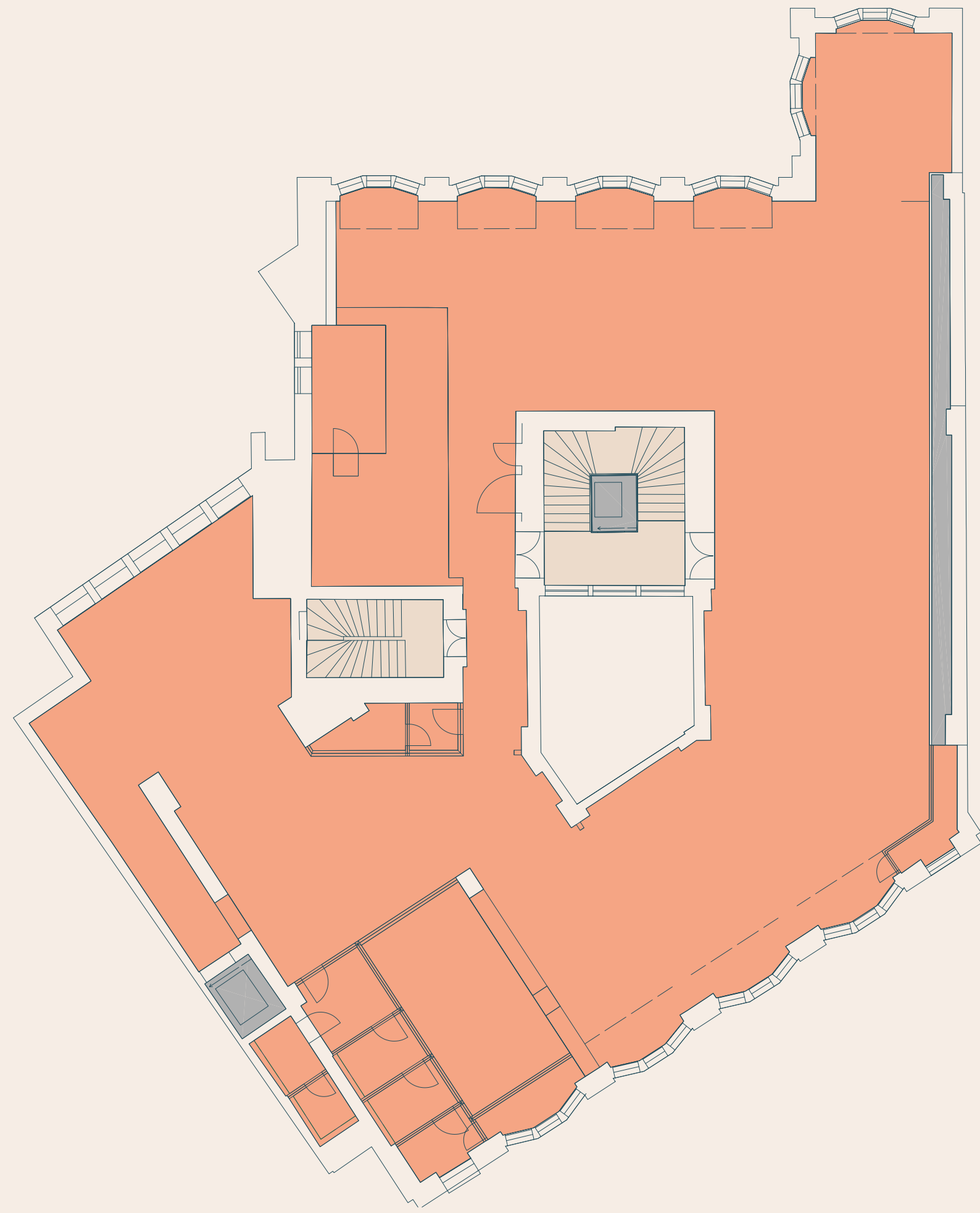


Level 2  
**607** *sq m available*

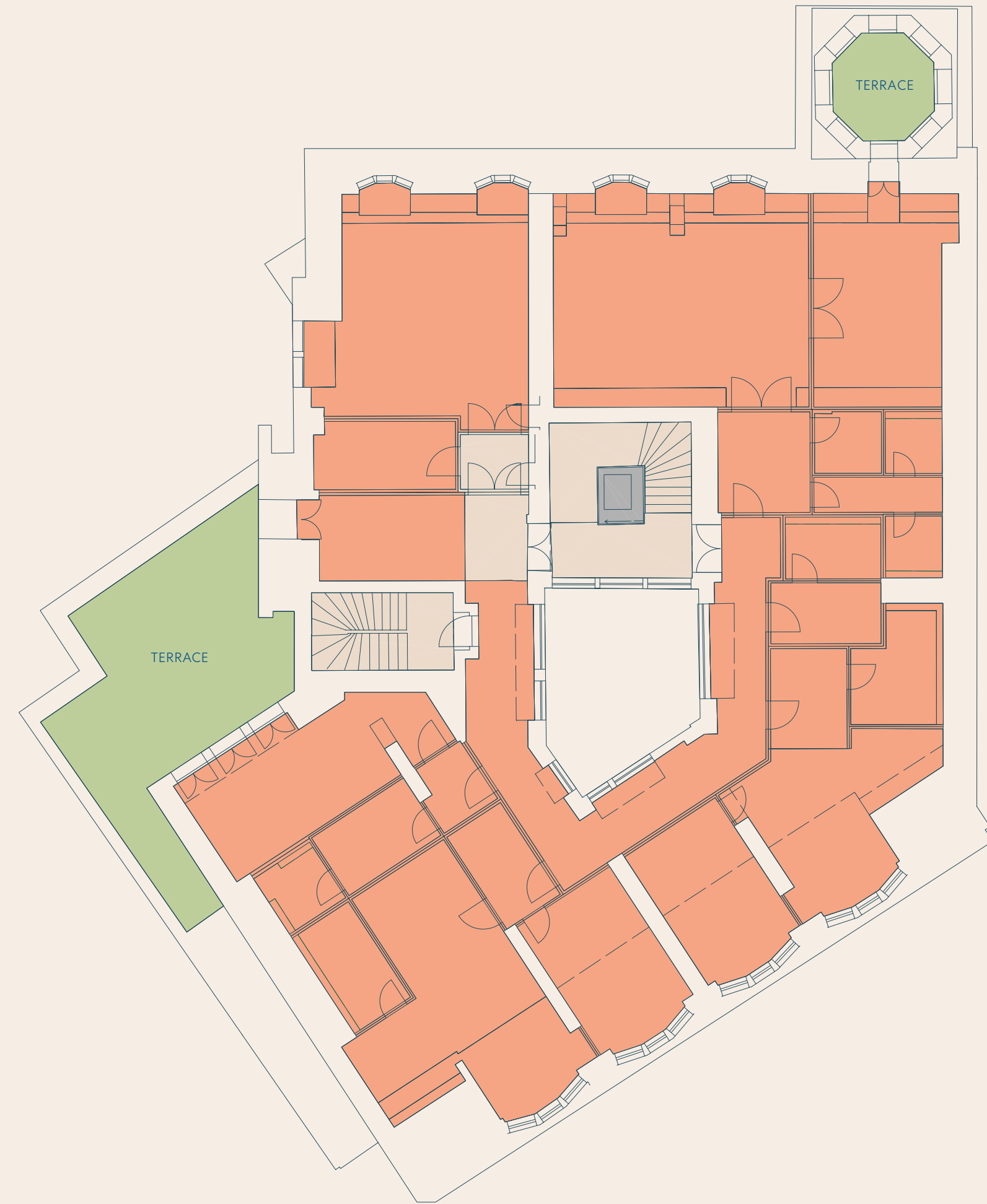


Level 3  
**617** *sq m available*





Level 4  
**576** *sq m available*



Level 5  
**537** *sq m available*





Discover a Piece  
of Berlin's Past



## A PLACE TO WORK

Potsdamer Platz includes 130,000 sqm office space in total and offers workspace for 30,000 employees daily.



wework.

Booking.com

ZENTIVA

 Aroundhome

Hubert Burda Media

  
TOLL COLLECT  
service on the road

STRÖER

BAIN & COMPANY 

ALSTOM

 Freshfields

 Teleperformance

janssen 



## A PLACE TO DINE

With a total of 20 places to grab lunch or have a fine dining experience. Potsdamer Platz has an option for every moment of your day.



# The best of Berlin is on your doorstep



**MAREDO**

**Caffè e Gelato**

**Burgermeister**

**MANIFESTO**  
Market

**weilands**

**FIVE GUYS**

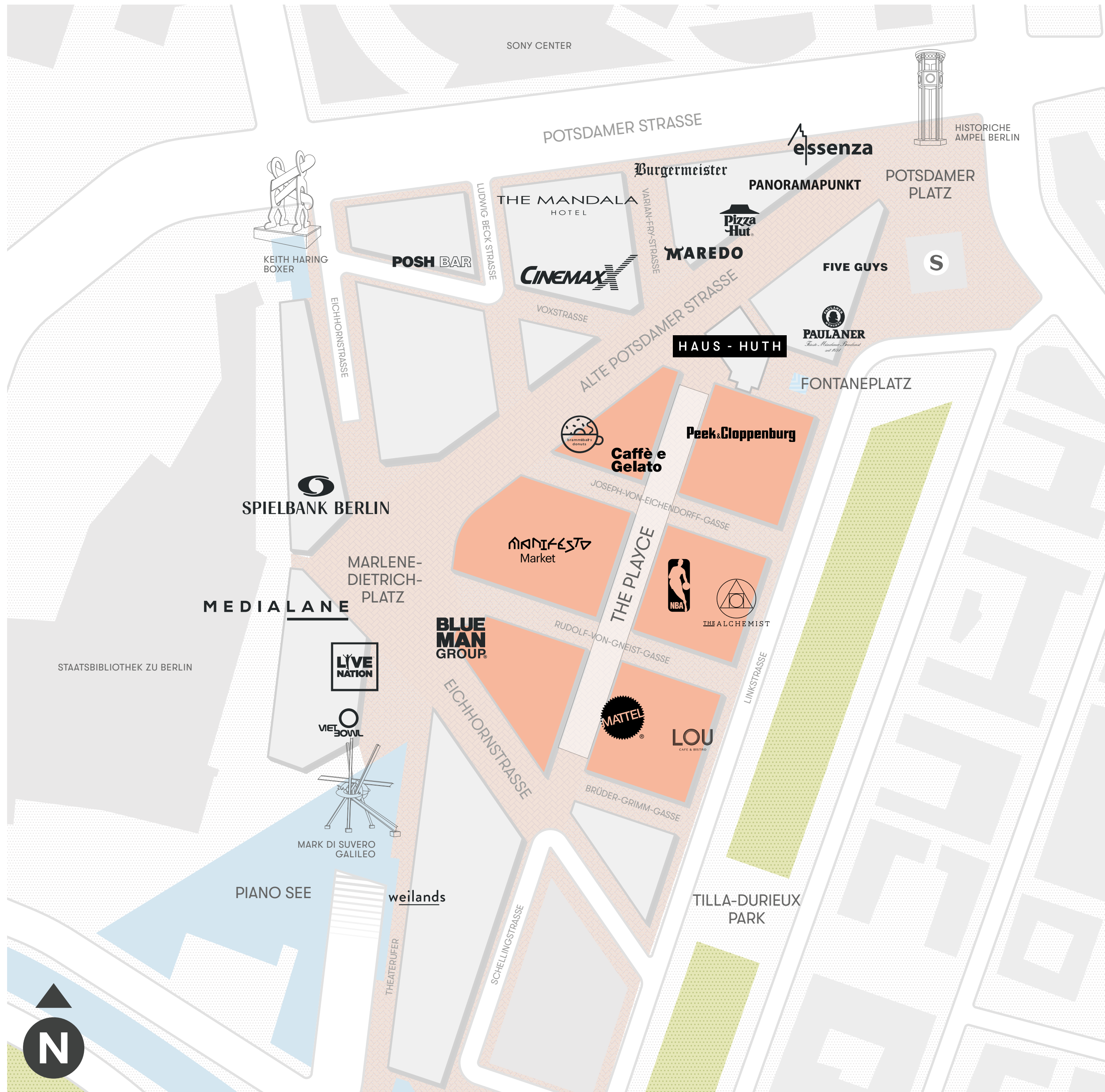
**LOU**  
CAFÉ & BISTRO



**essenza**







## POTSDAMER PLATZ

270,000 sqm Total Estate Space

130,000 sqm Office space

46,000 sqm Retail Space

300+ Residential Units

1 Five Star Hotel

19 Cinema Screens

World-Class Theatres

Largest Casino in Berlin

2,000+ Underground Parking Slots

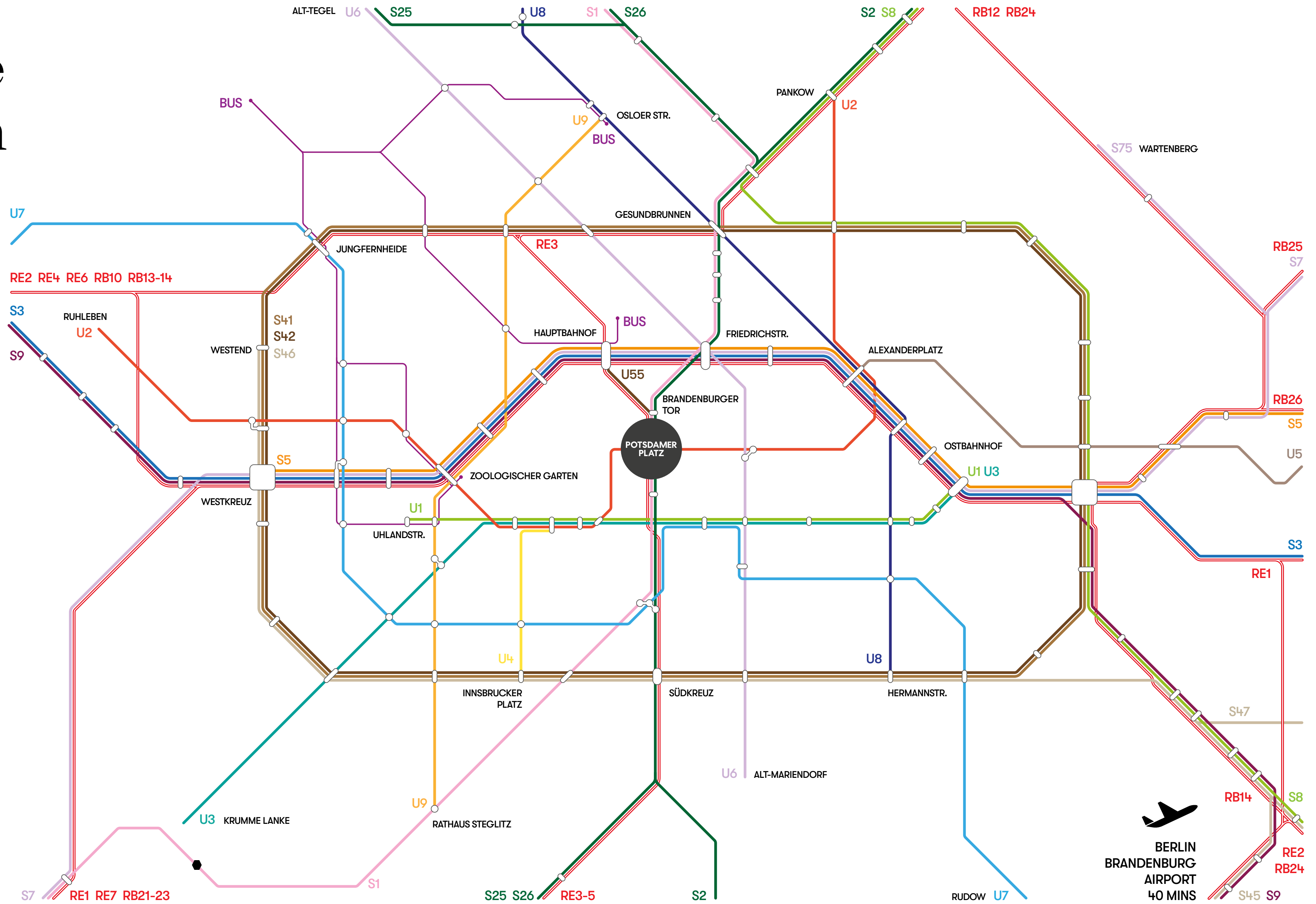






CONNECTIVITY

Easily accessible from all of Berlin



Hauptbahnhof  
Alexanderplatz  
Zoologischer Garten

5 Mins  
10 Mins  
10 Mins



Brandenburger Tor  
Checkpoint Charlie  
Gendarmenmarkt

10 Mins  
15 Mins  
15 Mins

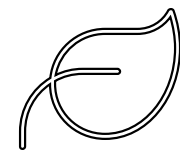
BERLIN BRANDENBURG AIRPORT  
40 MINS



## BROOKFIELD PROPERTIES



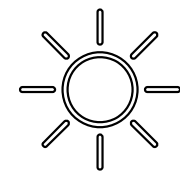
99% of the core office portfolio has a sustainability designation



Brookfield Properties is working diligently to mitigate our global carbon impact ahead of targets.

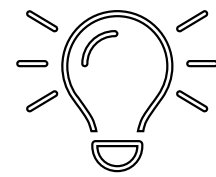


20% reduction in retail energy consumption since 2018

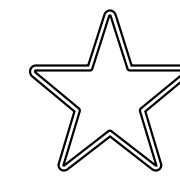


14MW of Solar Capacity was added to our retail portfolio

## POTSDAMER PLATZ



Potsdamer Platz will be the first district to follow the Berlin Light Plan mitigating ambient light for wildlife and light pollution.



Potsdamer Platz is Well Health & Safety Rated



The newly pedestrianization of the public realm will increase trees by 30%, create raingardens to enhance potable water.



Bike infrastructure and a pedestrian zone will incentivize sustainable transit options



# A sustainability first urban development

## CERTIFICATIONS





## CONTACTS

### KATHARINA TREIBER

Senior Vice President

katharina.treiber@brookfieldproperties.com

+49 172 301 417 0

### ANTONIA GERMELMANN

Senior Associate

antonia.germelmann@brookfieldproperties.com

+49 174 69 19 766

### PABLO MOLL

Analyst

pablo.moll@brookfieldproperties.com

+49 176 1023 4046

[www.potsdamerplatz.de](http://www.potsdamerplatz.de)

[@potsdamer\\_platz](https://www.instagram.com/potsdamer_platz)

[/potsdamerplatz](https://www.facebook.com/potsdamerplatz)



**Brookfield**  
Properties