

**POTSDAMER
PLATZ**

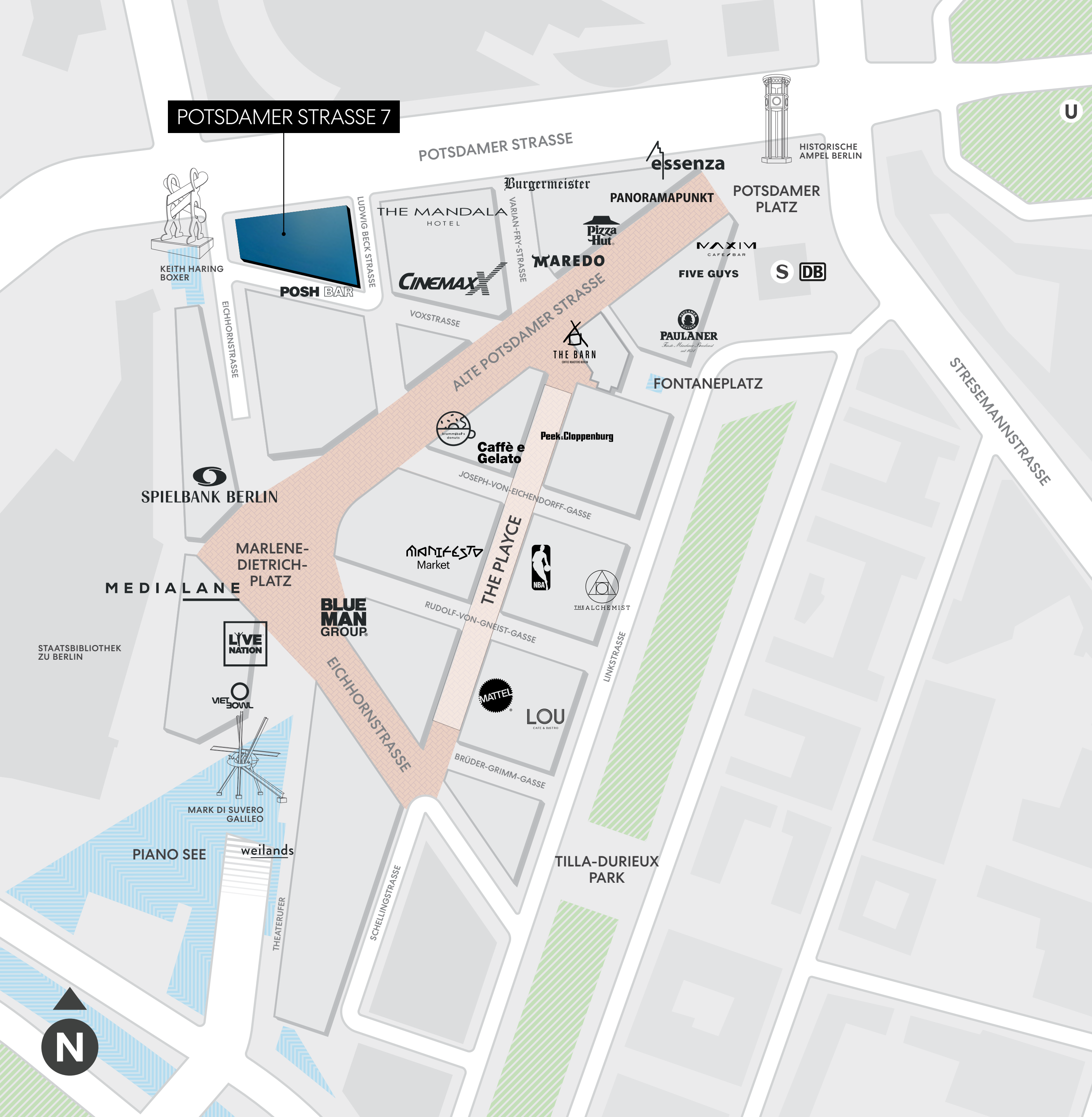
POTSDAMER
STRASSE 7





DGNB





BE AT THE CENTRE OF IT ALL

270k
sqm total estate space

130k
sqm office space

46k
sqm retail space

300+
residential units

2
five star hotels

19
cinema screens

55+
food offers

2k+
underground parking slots

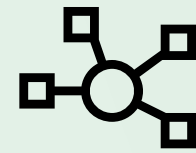
Berlin's largest casino and world-class theatres

TECHNICAL INFORMATION

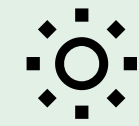
[HTTPS://BETTER.
AGENCY/WORK/
CLAPHAM-PARK/](https://better.agency/work/clapham-park/)



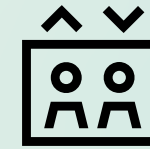
Up to
2,80 m
Ceiling Heights



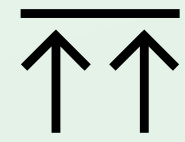
CAT 7
Wiring on Data Network
+ Telephone Network



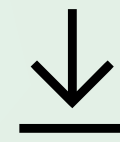
Well Lit
Highly Efficient New
LED Lighting



3
Passenger Lifts



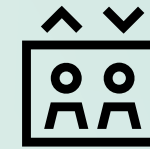
Raised
Floors



500 kg/m²
Floor capacity



Airing
Filtering, heating, cooling
on each floor



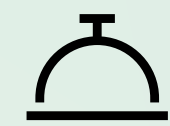
Garage
Access to garage via elevator



Terraces
On 7th and 8th floor



Rooftop
Big rooftop terrace
on 9th floor



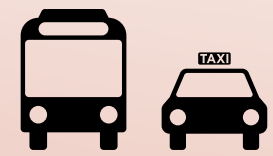
1
Main Entrance
Receptions



1
Goods lift



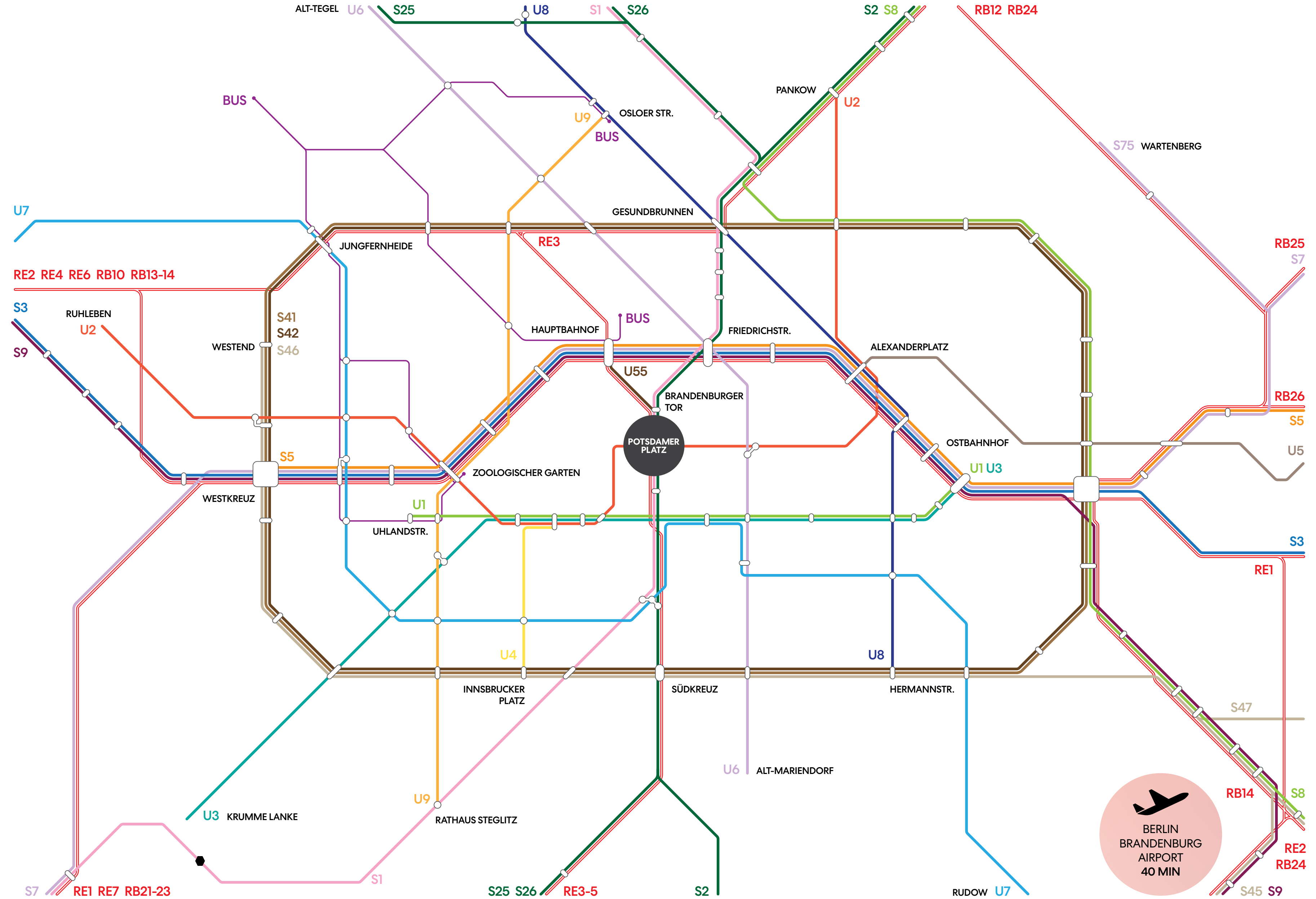
EASILY ACCESSIBLE FROM ALL OF BERLIN



Hauptbahnhof	5 min
Alexanderplatz	10 min
Zoologischer Garten	10 min



Brandenburger Tor	10 min
Checkpoint Charlie	15 min
Gendarmenmarkt	15 min



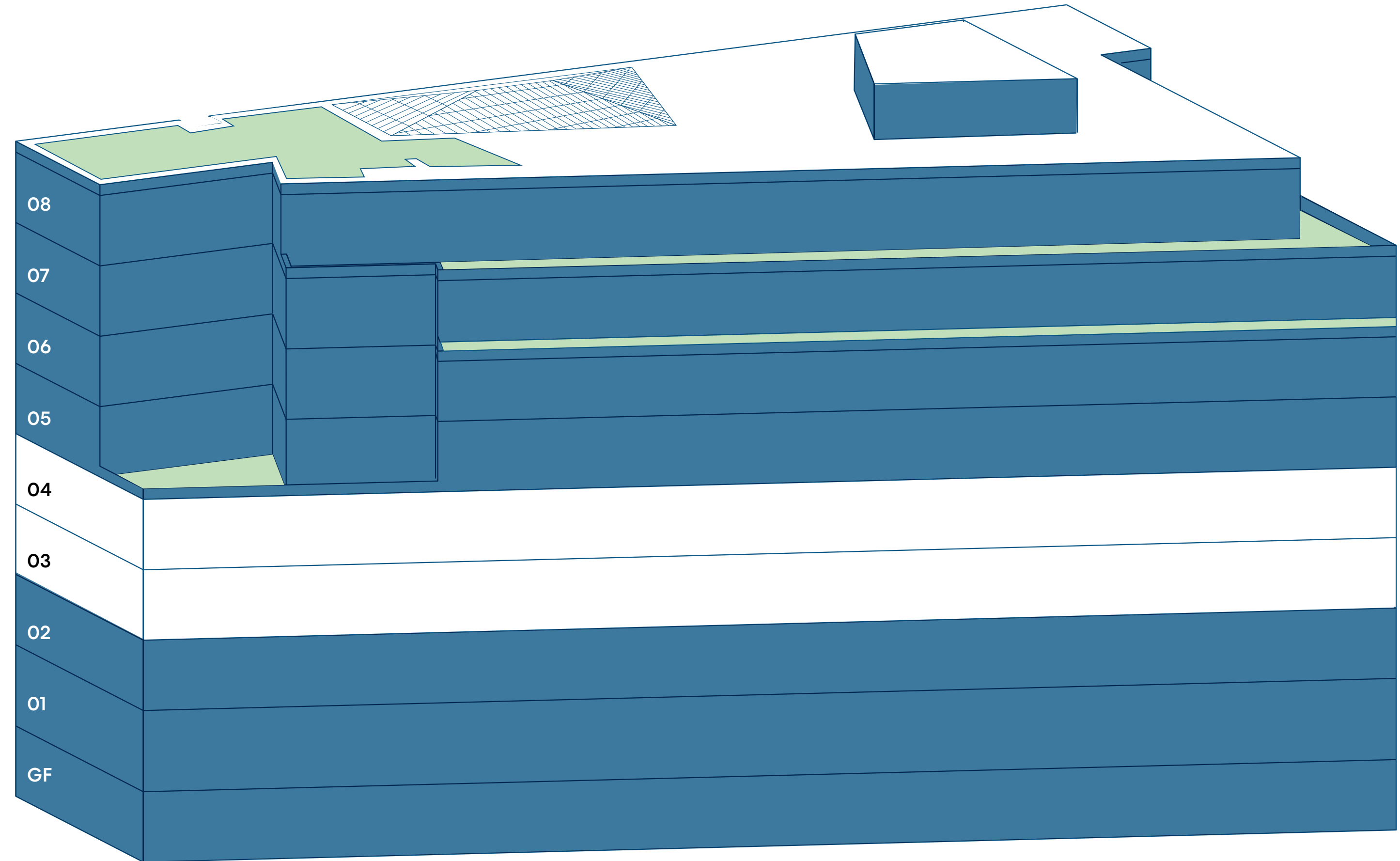
YOUR NEW HQ SPACE

Large Block Opportunities

Ground Floor to Eighth Floor

ROOFTOP TERRACE	ca. 194m ²
EIGHTH FLOOR	ca. 1,187m ²
SEVENTH FLOOR	ca. 1,274m ²
SIXTH FLOOR	ca. 1,281m ²
FIFTH FLOOR	ca. 1,280m ²
SECOND FLOOR	ca. 1,324m ²
FIRST FLOOR	ca. 615m ²
GROUND FLOOR	ca. 250 m ²

- Available Office/Retail
- Terrace



GROUND FLOOR

250 m²

Total lettable area approx.

Available Now

- Available Office/Retail
- Terrace



250 m²

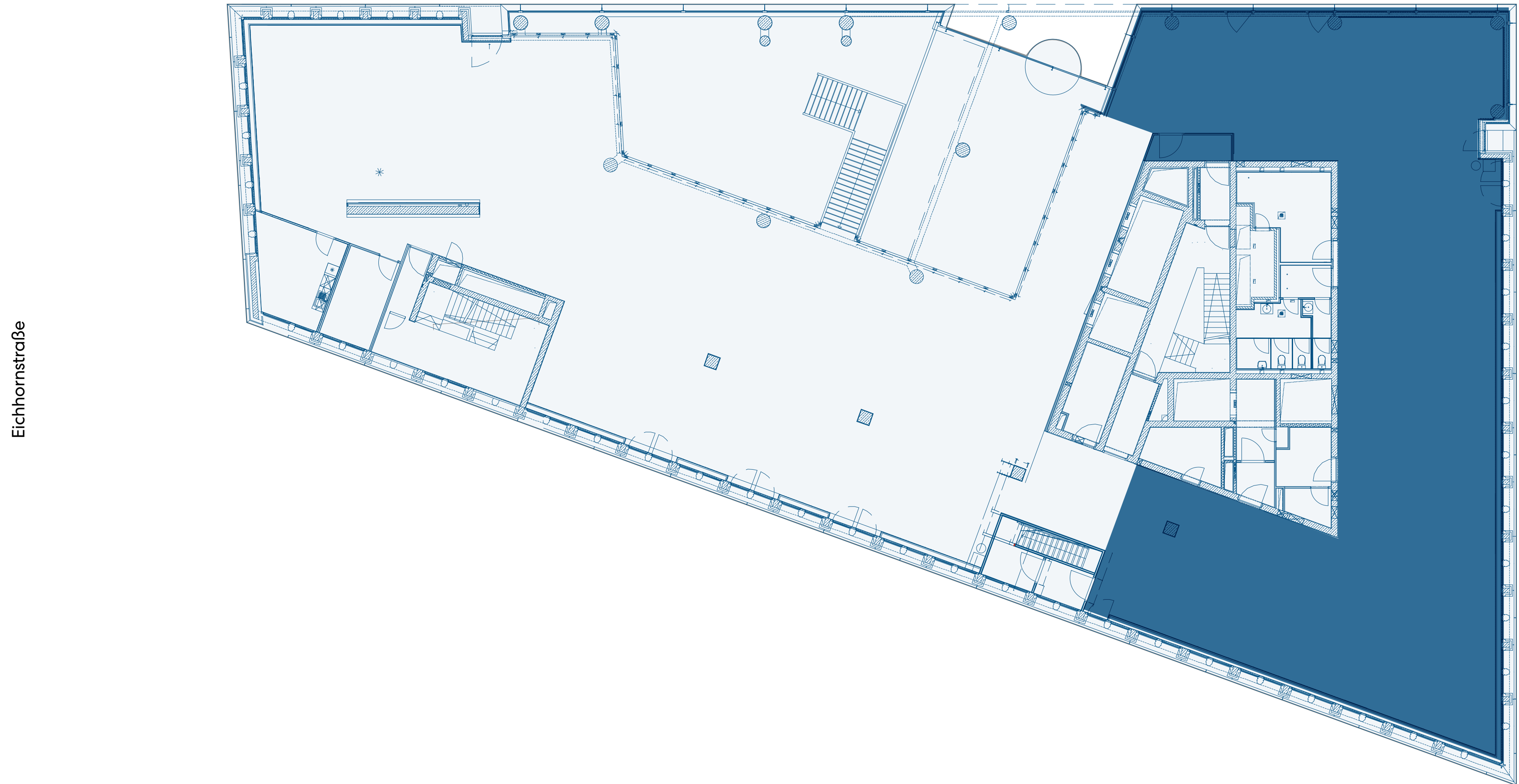
Lettable area approx.

Eichhornstraße

Ludwick-Beck-Straße

Voxstraße

FIRST FLOOR



Eichhornstraße

Ludwick-Beck-Straße

Voxstraße

615 m²

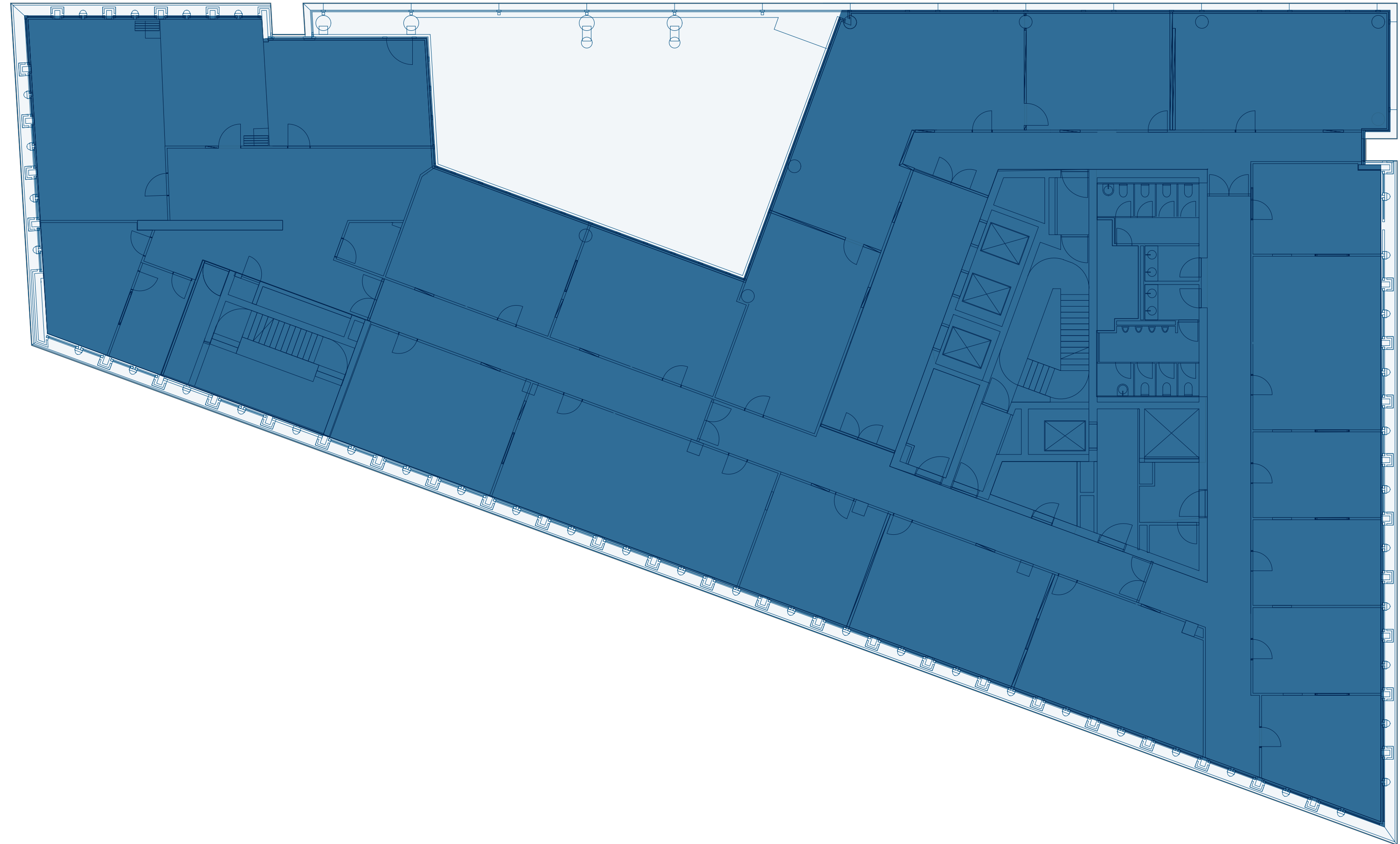
Total lettable area approx.

Available Now

● Available Office/Retail

SECOND FLOOR

Eichhornstraße



Ludwick-Beck-Straße

1,324 m²

Total lettable area approx.

Available from 05.2025

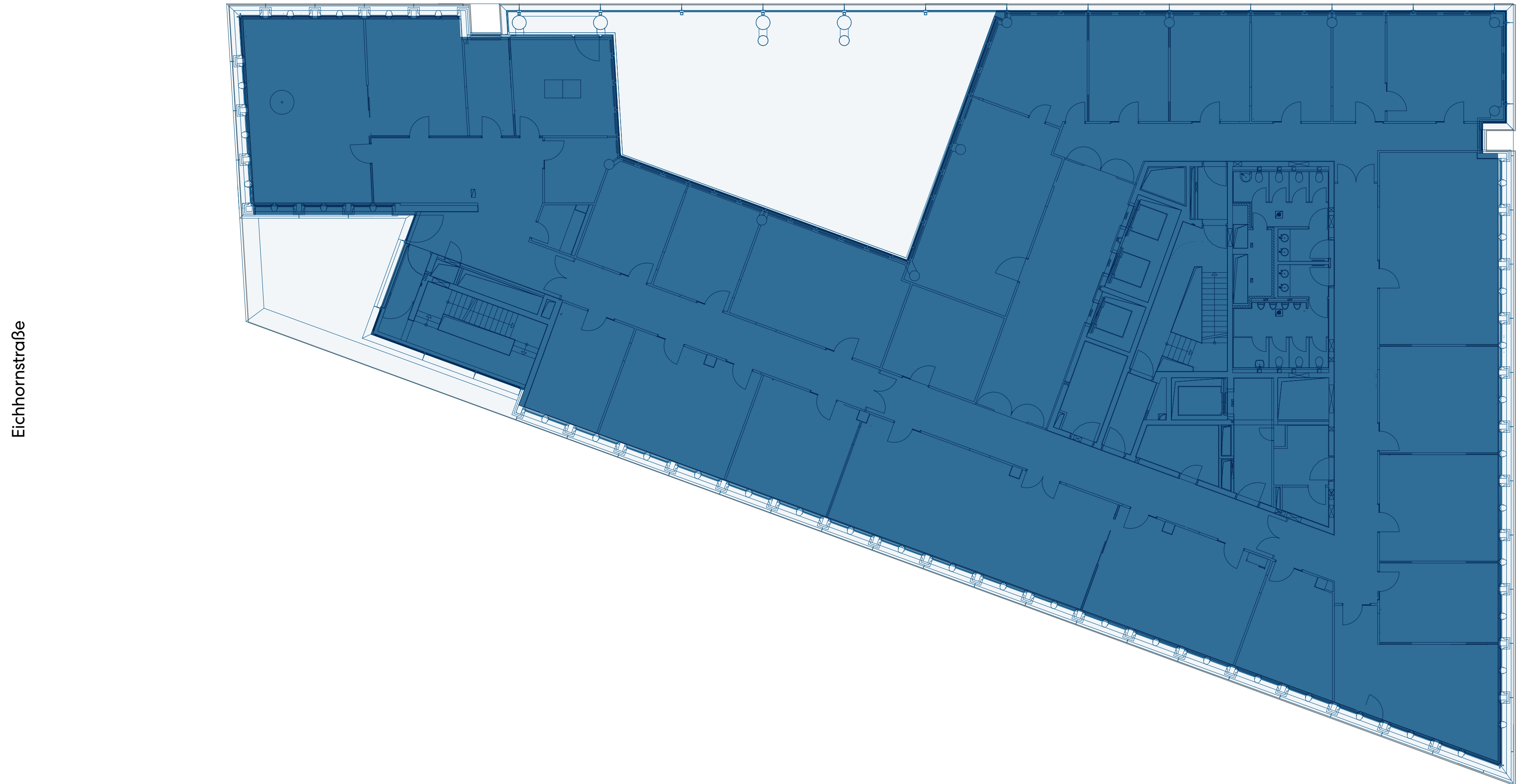
Divisible from ca. 600 m²

Floor size may vary

● Available Office/Retail

Voxstraße

FIFTH FLOOR



Eichhornstraße

Ludwick-Beck-Straße

Voxstraße

1,280 m²

Total lettable area approx.

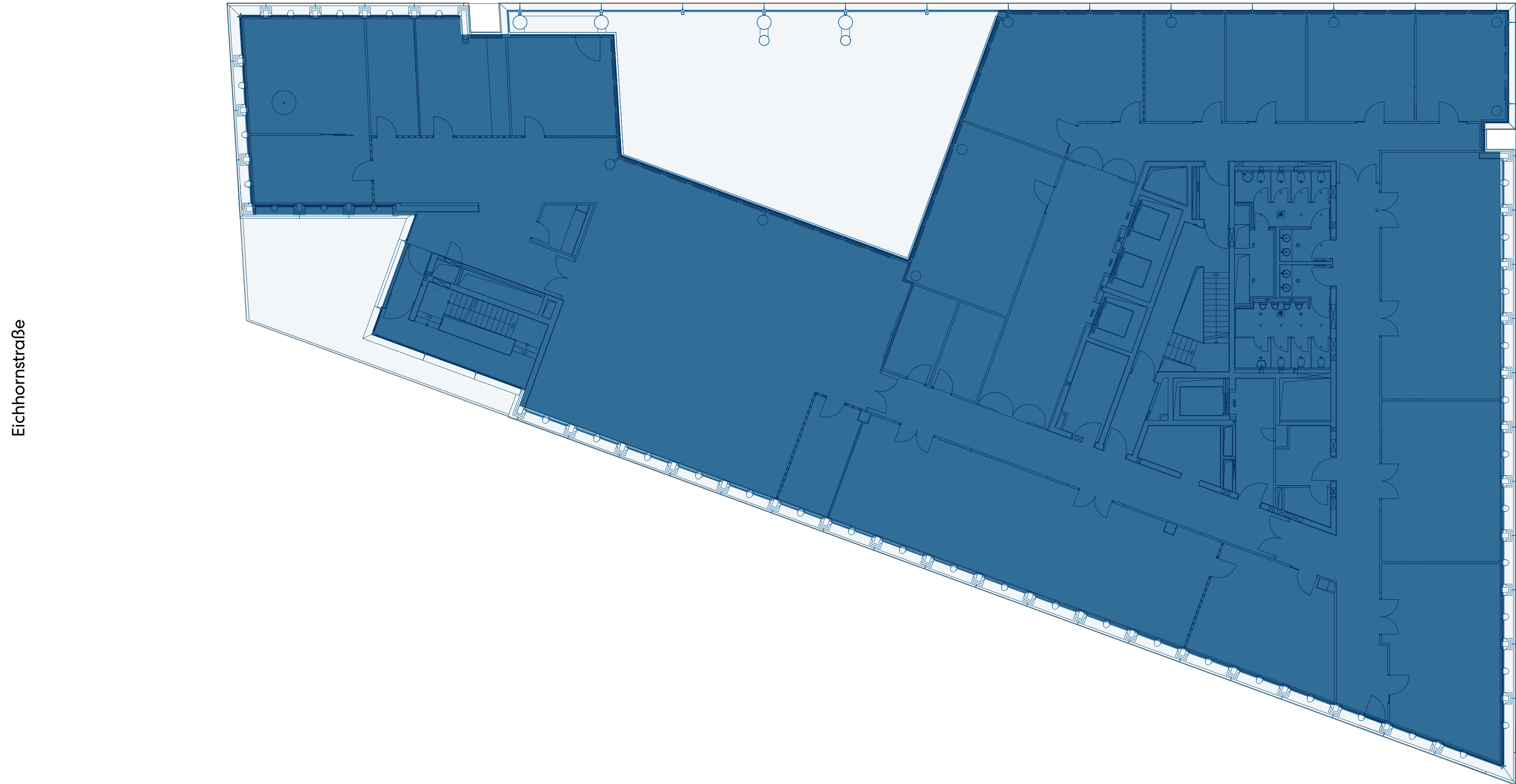
Available from 04.2025

Divisible from ca. 600 m²

Floor size may vary

● Available Office/Retail

SIXTH FLOOR



1,281 m²

Total lettable area approx.

Available Now

Divisible from ca. 600 m²

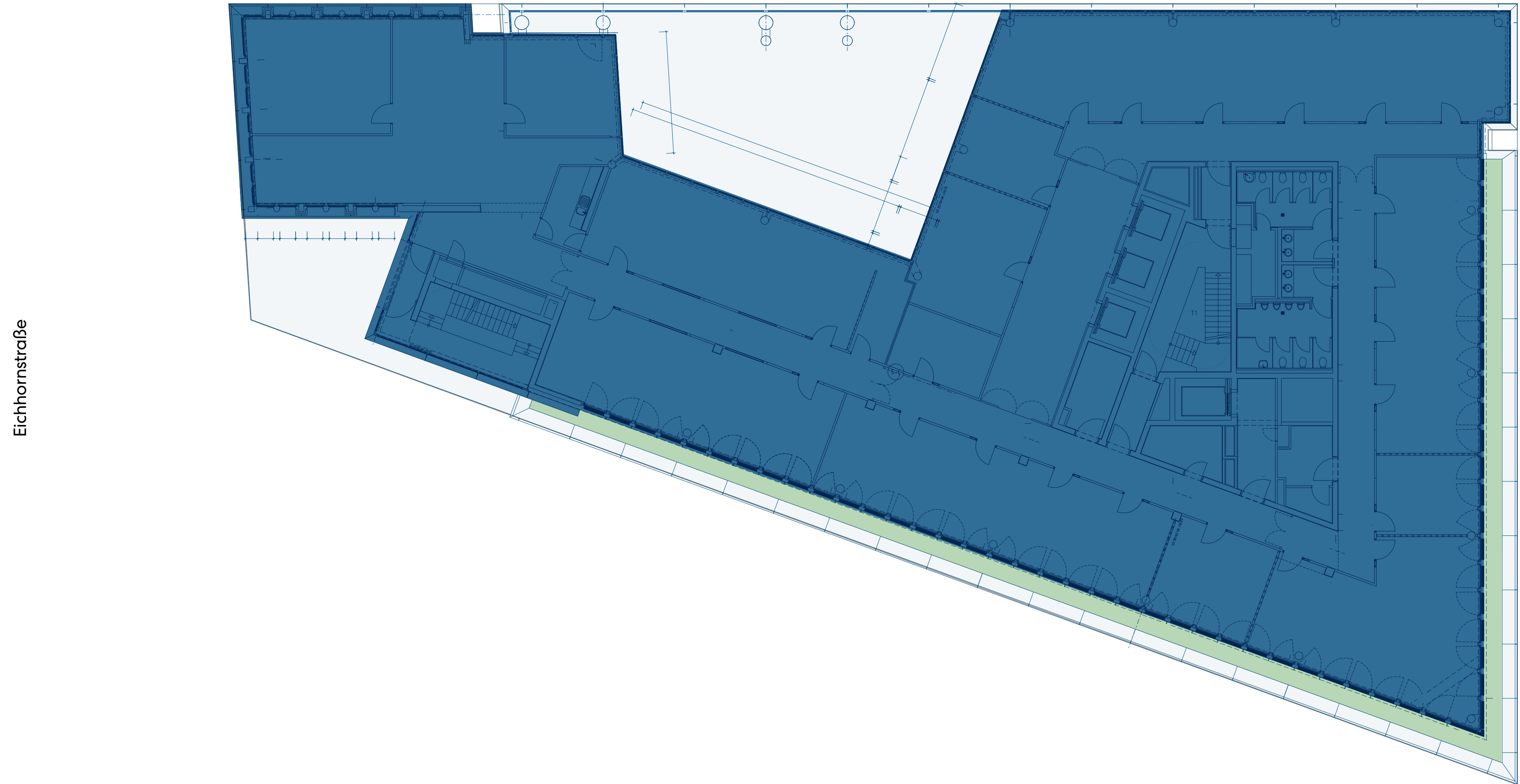
Floor size may vary

● Available Office/Retail

Voxstraße

Ludwick-Beck-Straße

SEVENTH FLOOR



1,274 m²

Total lettable area approx.

Available Now

Divisible from ca. 600 m²

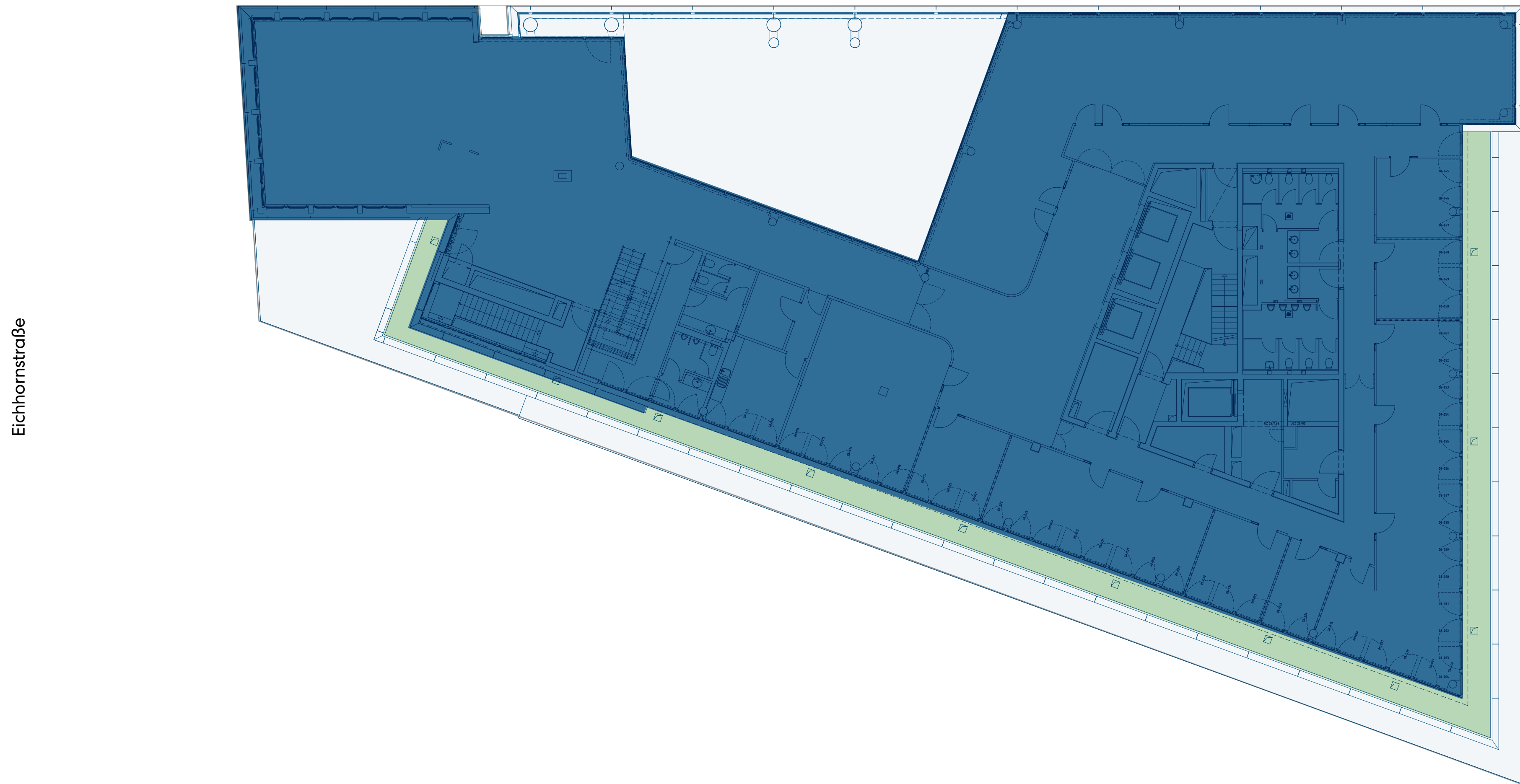
Floor size may vary

- Available Office/Retail
- Terrace

Voxstraße

Ludwick-Beck-Straße

EIGHTH FLOOR



Eichhornstraße

Ludwick-Beck-Straße

Voxstraße

1,187 m²

Total lettable area approx.

Available Now

Divisible from ca. 600 m²

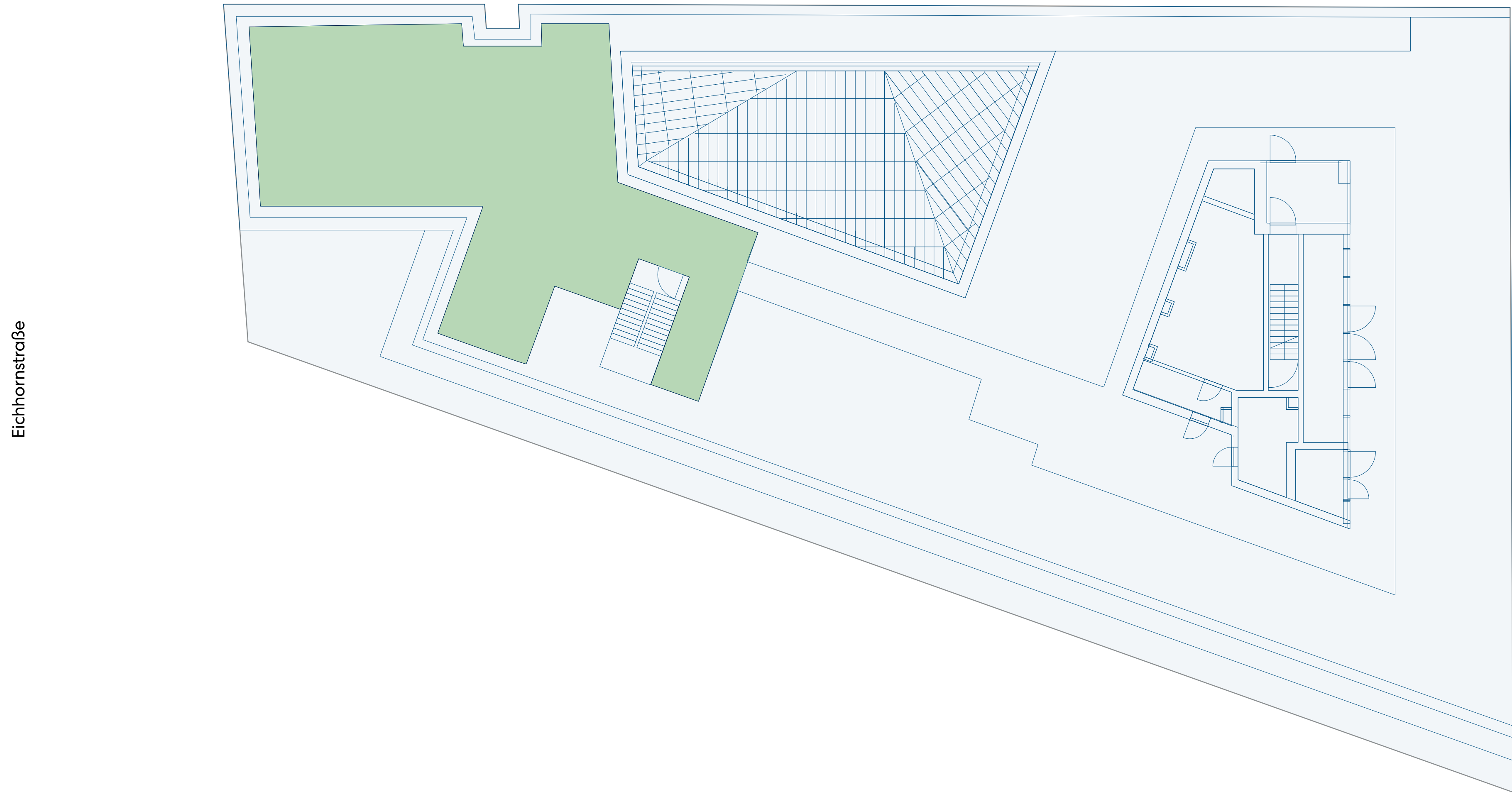
Floor size may vary

- Available Office/Retail
- Terrace



At Potsdamer Strasse 7 enjoy premium views of one of Berlin's most representative and exclusive areas. Our spacious rooftop terrace allows for an oasis right in the city center, buzzing with life. Great accessibility and a vast range of cultural offerings on your doorstep round off a perfect package for your new office.

TERRACE



194 m²

Total lettable area approx.

Available Now

- Available Office/Retail
- Terrace

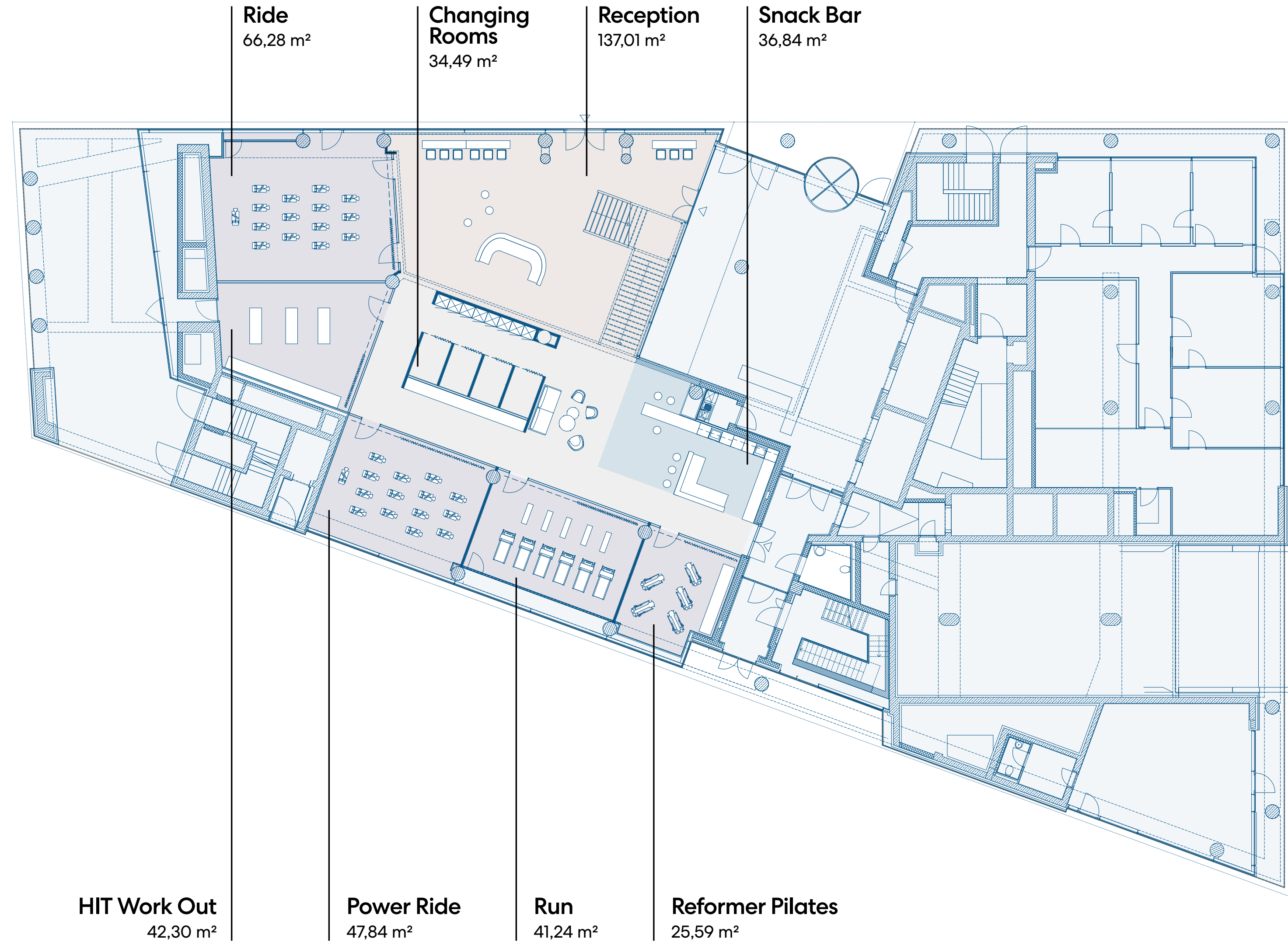
Voxstraße

Ludwick-Beck-Straße

LAYOUT OPTION

FITNESS

Eichhornstraße

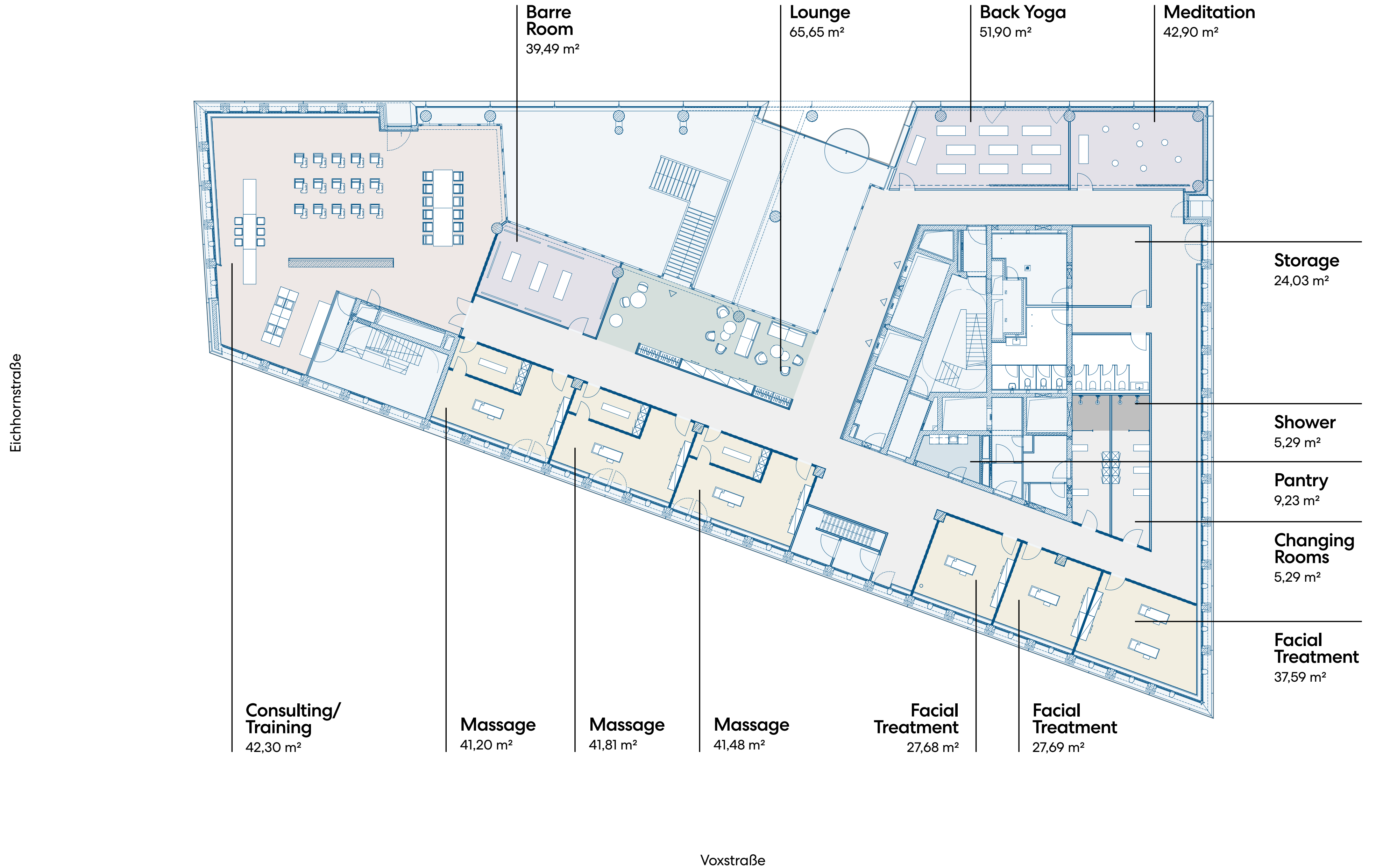


Voxstraße

Ludwick-Beck-Straße

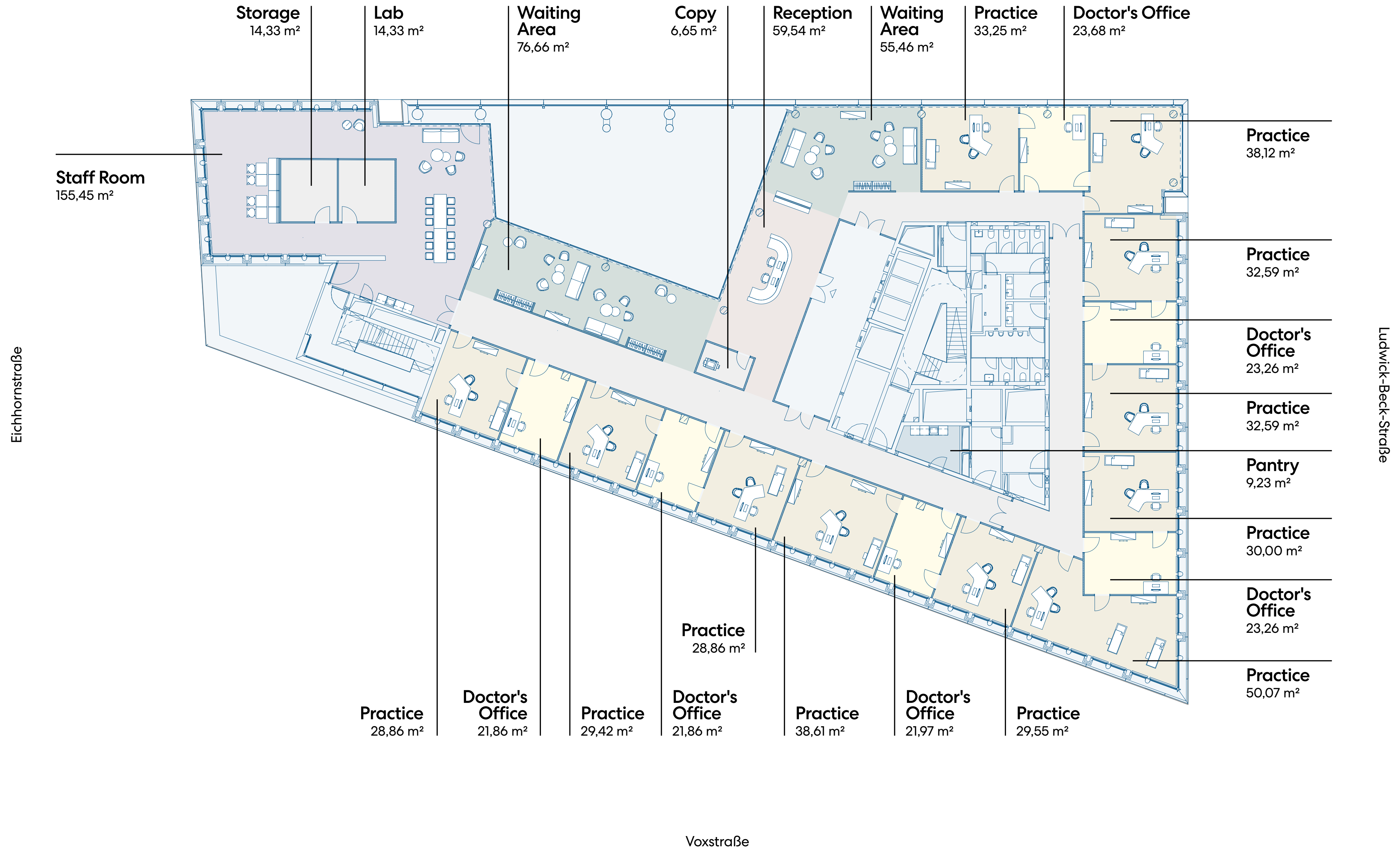
LAYOUT OPTION

WELLNESS



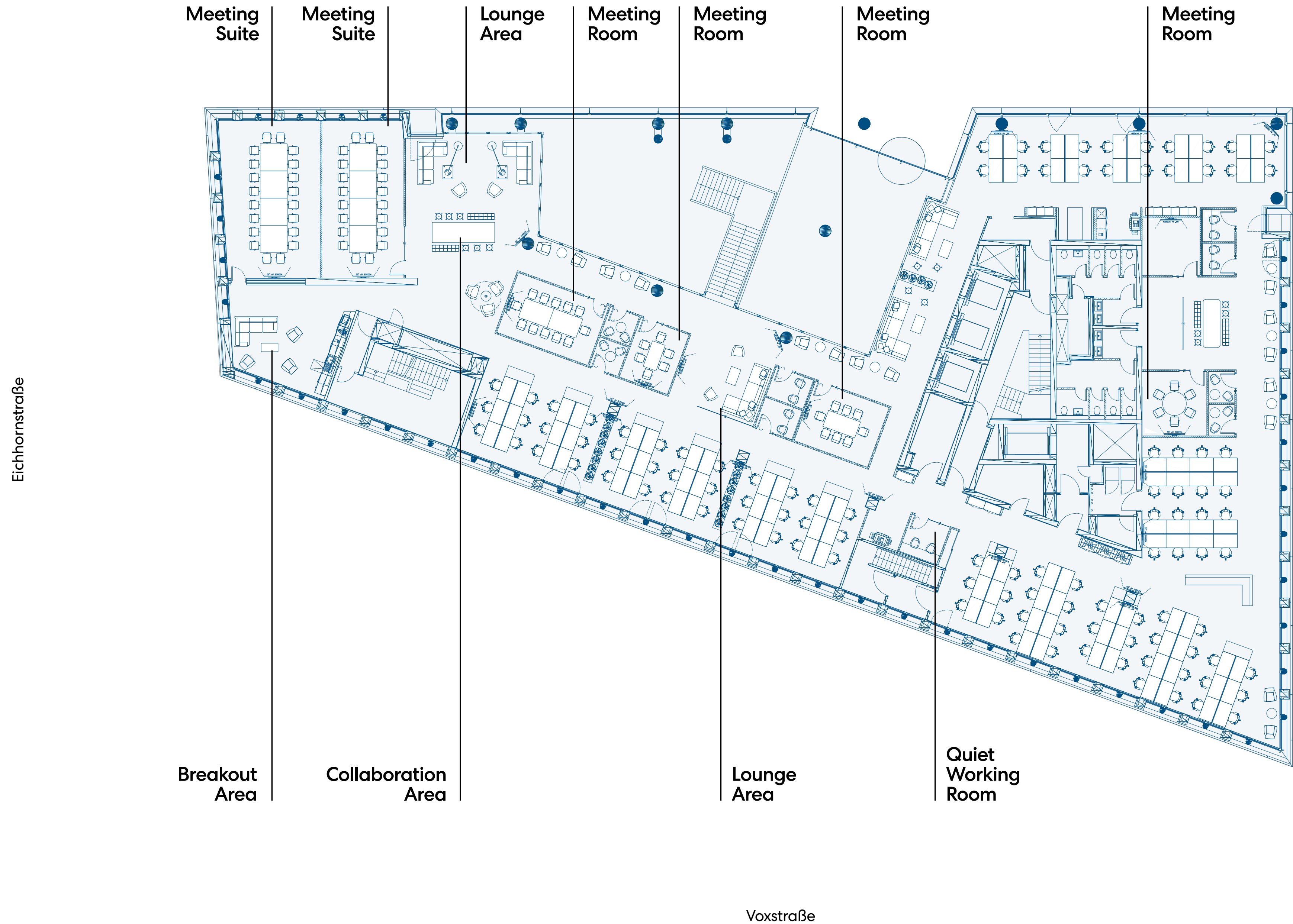
LAYOUT OPTION

MEDICAL CLINIC



LAYOUT OPTION

OFFICE





SUSTAINABILITY AT POTSDAMER PLATZ

One of the first districts in 2011 to be awarded the DGNB sustainability certification in gold for the use of health and environmentally friendly building materials, the absence of air conditioning systems and for central waste separation.



1.3 ha

approximately of urban water body in the form of a lake as a specifically designed biotope

20M

litres of drinking water are saved each year through collected rainwater

First

district in the city, to implement the Berlin Light Plan

50%

reduction of primary energy through efficient ventilation and façade system



DGNB



POTSDAMER STRASSE 7

**POTSDAMER
PLATZ**

CONTACT

KATHARINA TREIBER

Senior Vice President
katharina.treiber@brookfieldproperties.com
+49 172 301 417 0

ANTONIA GERMELMANN

Senior Associate
antonia.germelmann@brookfieldproperties.com
+49 174 691 976 6

PABLO MOLL

Analyst
pablo.moll@brookfieldproperties.com
+49 176 102 340 46

potsdamerplatz.de

Brookfield
Properties